

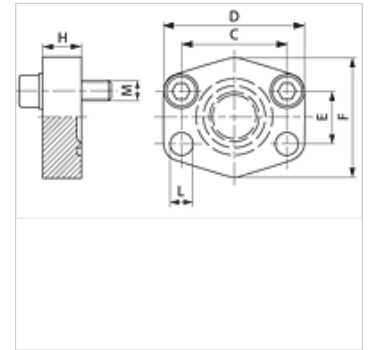
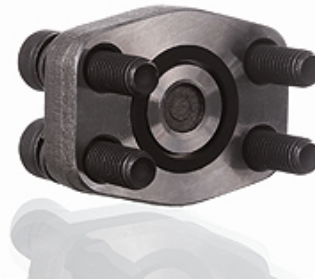
# AFC U (3000 / 6000 PSI)

Zaporna prirobnica SAE

**HANSA FLEX**

## Lastnosti

|                         |                                   |
|-------------------------|-----------------------------------|
| <b>Standard</b>         | SAE J 518 C<br>ISO 6162           |
| <b>Oblika izdelave</b>  | ravno                             |
| <b>Način izdelave</b>   | zaporna prirobnica SAE            |
| <b>Pritrditev</b>       | vijačna vrtina                    |
| <b>Obseg dobave</b>     | z UNC vijaki in tesnilnim obročem |
| <b>Material:</b>        | S355J2G3 (ST52.3)                 |
| <b>Zaščita površine</b> | črno naoljeno                     |



## Navodilo

Navedeni najvišji obratovalni tlak velja za prirobnico! Dejanski obratovalni tlak se določa na osnovi cevi (debeline stene) in na osnovi kvalitete cevi!

## Artikel

| Opis      | Tlačna vrsta | PB 10.9 (bar) | Velikost | C (mm) | D (mm) | E (mm) | F (mm) | H (mm) | L (mm) | M unc          |
|-----------|--------------|---------------|----------|--------|--------|--------|--------|--------|--------|----------------|
| AFC 80 U  | 3000 PSI     | 350           | 1/2"     | 38,1   | 56     | 17,5   | 48     | 16     | 9,0    | 5/16" x 1.1/4" |
| AFC 100 U | 3000 PSI     | 350           | 3/4"     | 47,6   | 65     | 22,2   | 50     | 16     | 11,0   | 3/8" x 1.1/2"  |
| AFC 102 U | 3000 PSI     | 315           | 1"       | 52,4   | 70     | 26,2   | 60     | 19     | 11,0   | 3/8" x 1.1/2"  |
| AFC 104 U | 3000 PSI     | 250           | 1.1/4"   | 58,7   | 79     | 30,2   | 68     | 18     | 11,5   | 7/16" x 1.1/2" |
| AFC 106 U | 3000 PSI     | 200           | 1.1/2"   | 69,9   | 93     | 35,7   | 78     | 20     | 13,5   | 7/16" x 1.1/2" |
| AFC 108 U | 3000 PSI     | 200           | 2"       | 77,8   | 102    | 42,9   | 90     | 20     | 13,5   | 7/16" x 1.1/2" |
| AFC 110 U | 3000 PSI     | 160           | 2.1/2"   | 88,9   | 114    | 50,8   | 105    | 20     | 13,5   | 7/16" x 1.1/2" |
| AFC 112 U | 3000 PSI     | 138           | 3"       | 106,4  | 134    | 61,9   | 124    | 24     | 17,5   | 5/8" x 2"      |
| AFC 114 U | 3000 PSI     | 35            | 3.1/2"   | 120,7  | 152    | 69,9   | 136    | 22     | 17,5   | 5/8" x 2"      |
| AFC 116 U | 3000 PSI     | 35            | 4"       | 130,2  | 162    | 77,8   | 146    | 25     | 17,5   | 5/8" x 2"      |
| AFC 118 U | 3000 PSI     | 35            | 5"       | 152,4  | 190    | 92,1   | 170    | 28     | 17,5   | 5/8" x 2"      |
| AFC 401 U | 6000 PSI     | 400           | 1/2"     | 40,5   | 56     | 18,2   | 48     | 16     | 9,0    | 5/16" x 1.1/4" |
| AFC 402 U | 6000 PSI     | 400           | 3/4"     | 50,8   | 71     | 23,8   | 60     | 19     | 11,0   | 3/8" x 1.1/2"  |
| AFC 403 U | 6000 PSI     | 400           | 1"       | 57,2   | 81     | 27,8   | 70     | 24     | 13,0   | 7/16" x 1.1/2" |
| AFC 404 U | 6000 PSI     | 400           | 1.1/4"   | 66,7   | 95     | 31,8   | 78     | 27     | 13,5   | 1/2" x 1.3/4"  |
| AFC 405 U | 6000 PSI     | 400           | 1.1/2"   | 79,4   | 112    | 36,5   | 94     | 30     | 17,0   | 5/8" x 2"      |
| AFC 406 U | 6000 PSI     | 400           | 2"       | 96,8   | 134    | 44,5   | 114    | 28     | 21,0   | 3/4" x 2.1/2"  |

PN = nazivni tlak PB = maks. obratovalni tlak

## Variante izdelka

|                         |  |
|-------------------------|--|
| AFC M (3000 / 6000 PSI) | Zaporna prirobnica SAE, s kompletom metričnih vijakov in tesnilnim obročem |
| AFC (3000 / 6000 PSI)   | Zaporna prirobnica SAE, samo prirobnica                                    |