

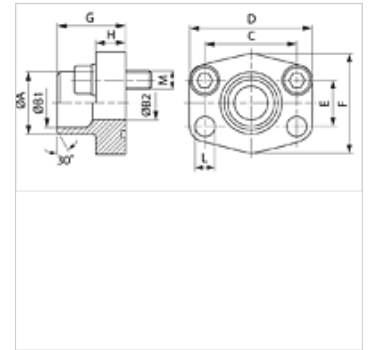
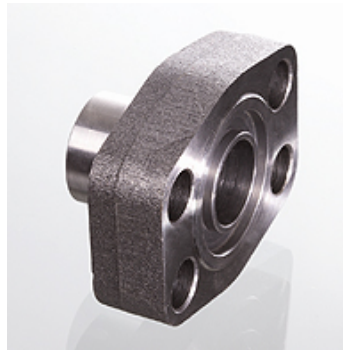
AFS SRE (3000 PSI)

Varilni prirobek SAE

HANSA FLEX

Lastnosti

| | |
|------------------|-------------------------|
| Tlačna vrsta | 3000 psi |
| Standard | SAE J 518 C ISO 6162 |
| Oblika izdelave | ravno |
| Način izdelave | varilni prirobek SAE |
| Pritrditev | vijačna vrtina |
| Obseg dobave | samo prirobnica |
| Material: | S355J2G3 (ST52.3) |
| Zaščita površine | črno naoljeno |



Navodilo

Navedeni najvišji obratovalni tlak velja za prirobnico! Dejanski obratovalni tlak se določa na osnovi cevi (debeline stene) in na osnovi kvalitete cevi!

Priporočeni vijaki so navedeni v stolpcih M (metr) ali M (unc).

Artikel

| Opis | PB 10.9 (bar) | Velikost | Cev | A (mm) | B1 (mm) | B2 (mm) | G (mm) | C (mm) | E (mm) | H (mm) | L (mm) | M metr. | M unc |
|------------------|------------------|----------|------------|-----------|------------|------------|-----------|-----------|-----------|-----------|-----------|-----------|----------------|
| AFS 80 SRE 20 | 350 | 1/2" | 20 x 3 | 20 | 14,0 | 14 | 35,0 | 38,1 | 17,5 | 16,0 | 9,0 | M 8 x 30 | 5/16" x 1.1/4" |
| AFS 80 SRE 22 | 350 | 1/2" | 22 x 3 | 22 | 16,0 | 13 | 35,0 | 38,1 | 17,5 | 16,0 | 9,0 | M 8 x 30 | 5/16" x 1.1/4" |
| AFS 100 SRE 25 | 350 | 3/4" | 25 x 3 | 25 | 19,0 | 19 | 36,0 | 47,6 | 22,2 | 18,0 | 11,0 | M 10 x 35 | 3/8" x 1.1/2" |
| AFS 100 SRE 28 | 350 | 3/4" | 28 x 3 | 28 | 21,5 | 19 | 36,0 | 47,6 | 22,2 | 18,0 | 11,0 | M 10 x 35 | 3/8" x 1.1/2" |
| AFS 102 SRE 30 | 315 | 1" | 30 x 4 | 30 | 22,0 | 22 | 38,0 | 52,4 | 26,2 | 18,0 | 11,0 | M 10 x 35 | 3/8" x 1.1/2" |
| AFS 102 SRE 35 | 315 | 1" | 35 x 4 | 35 | 27,0 | 25 | 38,0 | 52,4 | 26,2 | 18,0 | 11,0 | M 10 x 35 | 3/8" x 1.1/2" |
| AFS 104 SRE 38 | 250 | 1.1/4" | 38 x 4 | 38 | 30,0 | 30 | 41,0 | 58,7 | 30,2 | 21,0 | 11,5 | M 10 x 40 | 7/16" x 1.1/2" |
| AFS 104 SRE 42 | 250 | 1.1/4" | 42 x 3 | 43 | 36,0 | 31 | 41,0 | 58,7 | 30,2 | 21,0 | 11,5 | M 10 x 40 | 7/16" x 1.1/2" |
| AFS 106 SRE 38 | 200 | 1.1/2" | 38 x 4 | 38 | 30,0 | 30 | 44,0 | 69,9 | 35,7 | 25,0 | 13,5 | M 12 x 45 | 1/2" x 1.3/4" |
| AFS 106 SRE 42 | 200 | 1.1/2" | 42 x 3 | 42 | 36,0 | 36 | 44,0 | 69,9 | 35,7 | 25,0 | 13,5 | M 12 x 45 | 1/2" x 1.3/4" |
| AFS 106 SRE 48.3 | 200 | 1.1/2" | 48,3 x 4,5 | 49 | 38,0 | 38 | 44,0 | 69,9 | 35,7 | 25,0 | 13,5 | M 12 x 45 | 1/2" x 1.3/4" |
| AFS 108 SRE 60 | 200 | 2" | 60,3 x 5,6 | 61 | 49,0 | 49 | 45,0 | 77,8 | 42,9 | 25,0 | 13,5 | M 12 x 45 | 1/2" x 1.3/4" |
| AFS 110 SRE 76 | 160 | 2.1/2" | 76,1 x 7,1 | 77 | 62,0 | 62 | 50,0 | 88,9 | 50,8 | 25,0 | 13,5 | M 12 x 45 | 1/2" x 1.3/4" |
| AFS 112 SRE 76 | 160 | 3" | 76,1 x 7,1 | 77 | 62,0 | 62 | 51,0 | 106,4 | 61,9 | 26,0 | 17,5 | M 16 x 50 | 5/8" x 2" |

PN = nazivni tlak PB = maks. obratovalni tlak

Variante izdelka

AFS SRE M (3000 / 6000 PSI) Varilni prirobek SAE, s kompletom metričnih vijakov in tesnilnim obročem

AFS SRE U (3000 / 6000 PSI) Varilni prirobek SAE, z UNC vijaki in tesnilnim obročem