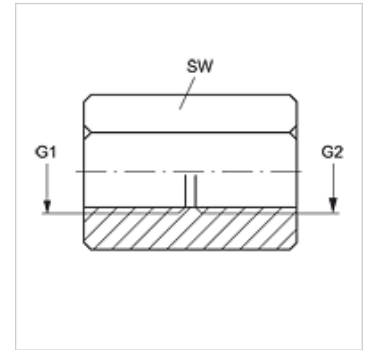
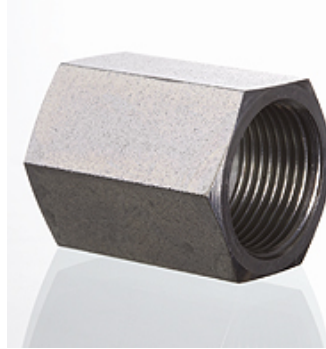


Lastnosti

| | |
|-------------------------|--------------------------------|
| Priključek 1 | notranji navoj BSP cilindričen |
| Priključek 2 | notranji navoj BSP cilindričen |
| Način izdelave | vezni cevni nastavek |
| Oblika izdelave | ravno |
| Material: | jeklo |
| Zaščita površine | galvanično prevlečeno |



Artikel

| Opis | G1 | G2 | SW (mm) |
|---------------|--------------|--------------|------------|
| G IR 02 | G 1/8" -28 | G 1/8" -28 | 14 |
| G IR 04 IR 02 | G 1/4" -19 | G 1/8" -28 | 19 |
| G IR 04 | G 1/4" -19 | G 1/4" -19 | 19 |
| G IR 06 IR 04 | G 3/8" -19 | G 1/4" -19 | 22 |
| G IR 06 | G 3/8" -19 | G 3/8" -19 | 22 |
| G IR 08 IR 04 | G 1/2" -14 | G 1/4" -19 | 27 |
| G IR 08 IR 06 | G 1/2" -14 | G 3/8" -19 | 27 |
| G IR 08 | G 1/2" -14 | G 1/2" -14 | 27 |
| G IR 10 IR 08 | G 5/8" -14 | G 1/2" -14 | 30 |
| G IR 10 | G 5/8" -14 | G 5/8" -14 | 30 |
| G IR 12 | G 3/4" -14 | G 3/4" -14 | 32 |
| G IR 12 IR 08 | G 3/4" -14 | G 1/2" -14 | 32 |
| G IR 16 IR 12 | G 1" -11 | G 3/4" -14 | 41 |
| G IR 16 | G 1" -11 | G 1" -11 | 41 |
| G IR 20 IR 12 | G 1,1/4" -11 | G 3/4" -14 | 50 |
| G IR 20 IR 16 | G 1,1/4" -11 | G 1" -11 | 50 |
| G IR 20 | G 1,1/4" -11 | G 1,1/4" -11 | 50 |
| G IR 24 IR 20 | G 1,1/2" -11 | G 1,1/4" -11 | 55 |
| G IR 24 | G 1,1/2" -11 | G 1,1/2" -11 | 55 |
| G IR 32 IR 24 | G 2" -11 | G 1,1/2" -11 | 70 |
| G IR 32 | G 2" -11 | G 2" -11 | 70 |

SW = ključna širina

Variante izdelka

G IR VA Priključni nastavki, nerjavno jeklo