

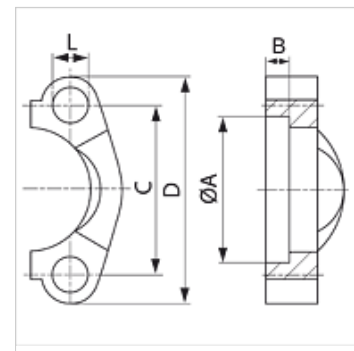
# SFH (3000 PSI / 6000 PSI) VA

Polovica objemke SAE

**HANSA FLEX**

## Lastnosti

|                |                          |
|----------------|--------------------------|
| Način izdelave | polovica objemke SAE     |
| Standard       | SAE J518, ISO 6162-1 /-2 |
| Obseg dobave   | samo prirobnica          |
| Material:      | nerjavno jeklo           |
| Pritrditev     | vijačna vrtina           |



## Navodilo

Priporočeni vijaki so navedeni v stolpcih M (metr) ali M (unc).

## Artikel

| Opis       | Tlačna vrsta | velikost prirobnice | PB 10.9<br>(bar) | A<br>(mm) | B<br>(mm) | C<br>(mm) | D<br>(mm) | L<br>(mm) | M metr.   | M unc          |
|------------|--------------|---------------------|------------------|-----------|-----------|-----------|-----------|-----------|-----------|----------------|
| SFH 13 VA  | 3000 PSI     | 1/2"                | 350              | 31,0      | 6,2       | 38,1      | 54        | 8,7       | M 8 x 25  | 5/16" x 1.1/4" |
| SFH 20 VA  | 3000 PSI     | 3/4"                | 350              | 38,9      | 6,2       | 47,6      | 65        | 10,7      | M 10 x 30 | 3/8" x 1.1/4"  |
| SFH 25 VA  | 3000 PSI     | 1"                  | 315              | 45,2      | 7,5       | 52,4      | 70        | 10,7      | M 10 x 30 | 3/8" x 1.1/4"  |
| SFH 32 VA  | 3000 PSI     | 1.1/4"              | 250              | 51,6      | 7,5       | 58,7      | 79        | 12,0      | M 10 x 30 | 7/16" x 1.1/2" |
| SFH 40 VA  | 3000 PSI     | 1.1/2"              | 200              | 61,1      | 7,5       | 69,9      | 94        | 13,5      | M 12 x 35 | 1/2" x 1.1/2"  |
| SFH 50 VA  | 3000 PSI     | 2"                  | 200              | 72,2      | 9,0       | 77,8      | 102       | 13,5      | M 12 x 35 | 1/2" x 1.1/2"  |
| SFH 60 VA  | 3000 PSI     | 2.1/2"              | 160              | 84,9      | 9,0       | 88,9      | 114       | 13,5      | M 12 x 40 | 1/2" x 1.1/2"  |
| SFH 75 VA  | 3000 PSI     | 3"                  | 160              | 102,4     | 9,0       | 106,4     | 135       | 17,0      | M 16 x 50 | 5/8" x 2"      |
| SFH6 13 VA | 6000 PSI     | 1/2"                | 400              | 32,5      | 7,2       | 40,5      | 56        | 8,7       | M 8 x 30  | 5/16" x 1.1/4" |
| SFH6 20 VA | 6000 PSI     | 3/4"                | 400              | 42,1      | 8,3       | 50,8      | 71        | 10,7      | M 10 x 35 | 3/8" x 1.1/2"  |
| SFH6 25 VA | 6000 PSI     | 1"                  | 400              | 48,4      | 9,0       | 57,2      | 81        | 13,0      | M 12 x 45 | -              |
| SFH6 32 VA | 6000 PSI     | 1.1/4"              | 400              | 54,8      | 9,8       | 66,7      | 95        | 14,7      | M 14 x 45 | -              |
| SFH6 40 VA | 6000 PSI     | 1.1/2"              | 400              | 64,3      | 12,1      | 79,4      | 113       | 17,0      | M 16 x 55 | 5/8" x 2"      |
| SFH6 50 VA | 6000 PSI     | 2"                  | 400              | 80,2      | 12,1      | 96,8      | 133       | 21,0      | M 20 x 70 | 3/4" x 2.1/2"  |

## Pribor

|               |                                  |
|---------------|----------------------------------|
| AFS SCHR M    | Komplet metričnih vijakov, inbus |
| AFS SCHR U    | Komplet vijakov UNC, inbus       |
| SCHRAUBE M    | Vijak z notranjo šestkotno glavo |
| SCHRAUBE M VZ | Vijak z notranjo šestkotno glavo |