

# SRS 1-6 PA

Cevna objemka, lahka izvedba

**HANSA FLEX**

## Lastnosti

Način izdelave-dodatek notranja stran objemke z rebri

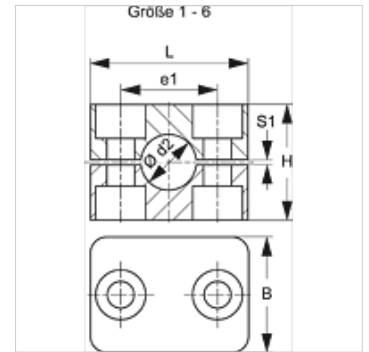
Serijska lahko

Standard DIN 3015-1

Temperatura min. -40 °C

Temperatura max. 120 °C

Material: poliamid 6



## Navodilo

Za pritrnitev cevi in kablov se priporoča uporaba objemk z gladko notranjo površino. Montira se brez prednapetja, višina bloka H se zato zmanjša za dimenzijo S1 vrzeli.

## Opis

Rebra na notranji površini objemk dušijo udarce in vibracije in zmanjšujejo sile vzporedno z osjo cevi.

Reža med obema polovicama ima za posledico prednapetje cevi.

## Navodila za naročanje

1 kos = 2 polovici objemke

## Artikel

| Opis           | Zunanji Ø cevi d2 (mm) | Zunanji Ø cevi d2 | Velikost objemke | e1 (mm) | H (mm) | L (mm) | S1 (mm) |
|----------------|------------------------|-------------------|------------------|---------|--------|--------|---------|
| SRS 106 A PA   | 6,0                    | -                 | 1                | 20      | 27     | 34     | 0,6     |
| SRS 106.4 A PA | 6,4                    | 1/4"              | 1                | 20      | 27     | 34     | 0,6     |
| SRS 108 A PA   | 8,0                    | 5/16"             | 1                | 20      | 27     | 34     | 0,6     |
| SRS 109.5 A PA | 9,5                    | 3/8"              | 1                | 20      | 27     | 34     | 0,6     |
| SRS 110 A PA   | 10,0                   | -                 | 1                | 20      | 27     | 34     | 0,6     |
| SRS 112 A PA   | 12,0                   | -                 | 1                | 20      | 27     | 34     | 0,6     |
| SRS 0212.7 PA  | 12,7                   | 1/2"              | 2                | 26      | 33     | 40     | 0,8     |
| SRS 0213.5 PA  | 13,5                   | -                 | 2                | 26      | 33     | 40     | 0,8     |
| SRS 0214 PA    | 14,0                   | -                 | 2                | 26      | 33     | 40     | 0,8     |
| SRS 0215 PA    | 15,0                   | -                 | 2                | 26      | 33     | 40     | 0,8     |
| SRS 0216 PA    | 16,0                   | 5/8"              | 2                | 26      | 33     | 40     | 0,8     |
| SRS 0217.2 PA  | 17,2                   | -                 | 2                | 26      | 33     | 40     | 0,8     |
| SRS 0218 PA    | 18,0                   | -                 | 2                | 26      | 33     | 40     | 0,8     |
| SRS 0319 PA    | 19,0                   | 3/4"              | 3                | 33      | 35     | 48     | 1,0     |
| SRS 0320 PA    | 20,0                   | -                 | 3                | 33      | 35     | 48     | 1,0     |
| SRS 0321.3 PA  | 21,3                   | -                 | 3                | 33      | 35     | 48     | 1,0     |
| SRS 0322 PA    | 22,0                   | -                 | 3                | 33      | 35     | 48     | 1,0     |
| SRS 0325 PA    | 25,0                   | 1"                | 3                | 33      | 35     | 48     | 1,0     |
| SRS 0426.9 PA  | 26,9                   | -                 | 4                | 40      | 42     | 57     | 1,2     |
| SRS 0428 PA    | 28,0                   | -                 | 4                | 40      | 42     | 57     | 1,2     |
| SRS 0430 PA    | 30,0                   | -                 | 4                | 40      | 42     | 57     | 1,2     |
| SRS 0532 PA    | 32,0                   | 1.1/4"            | 5                | 52      | 58     | 70     | 1,2     |
| SRS 0533.7 PA  | 33,7                   | -                 | 5                | 52      | 58     | 70     | 1,2     |
| SRS 0535 PA    | 35,0                   | -                 | 5                | 52      | 58     | 70     | 1,2     |
| SRS 0538 PA    | 38,0                   | 1.1/2"            | 5                | 52      | 58     | 70     | 1,2     |
| SRS 0540 PA    | 40,0                   | -                 | 5                | 52      | 58     | 70     | 1,2     |
| SRS 0542 PA    | 42,0                   | -                 | 5                | 52      | 58     | 70     | 1,2     |
| SRS 0644.5 PA  | 44,5                   | 1.3/4"            | 6                | 66      | 66     | 86     | 1,2     |
| SRS 0645 PA    | 45,0                   | -                 | 6                | 66      | 66     | 86     | 1,2     |
| SRS 0648 PA    | 48,0                   | -                 | 6                | 66      | 66     | 86     | 1,2     |
| SRS 0650 PA    | 50,0                   | -                 | 6                | 66      | 66     | 86     | 1,2     |
| SRS 0650.8 PA  | 50,8                   | 2"                | 6                | 66      | 66     | 86     | 1,2     |
| SRS 0652 PA    | 52,0                   | -                 | 6                | 66      | 66     | 86     | 1,2     |
| SRS 0655 PA    | 55,0                   | -                 | 6                | 66      | 66     | 86     | 1,2     |
| SRS 0657 PA    | 57,0                   | 2.1/4"            | 6                | 66      | 66     | 86     | 1,2     |



Kljub skrbnemu preverjanju napak ne moremo izključiti in za informacije, ki so tu navedene, ne prevzemamo nobene odgovornosti.

25.08.2024

HANSA-FLEX AG

www.hansa-flex.com

1

# SRS 1-6 PA

Cevna objemka, lahka izvedba

## Variante izdelka

**SRS 1-6 PA G** Cevna objemka, lahka izvedba, notranja stran objemke gladka

**SRS 1-6 PP** Cevna objemka, lahka izvedba, notranja stran objemke z rebri

**SRS 1-6 PP G** Cevna objemka, lahka izvedba, notranja stran objemke gladka

**SRS 1-6 VG** Cevna objemka, lahka izvedba, notranja stran objemke gladka

**SRS 1-6 AL** Cevna objemka, lahka izvedba, notranja stran objemke z rebri