

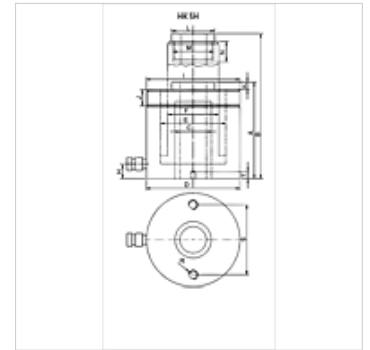
# HK SH

valj z votlim batom 700 bar

**HANSA FLEX**

## Lastnosti

<b>Izvedba</b>	glava valja, kaljena bat, trdo kromani povratna vzmet
<b>Obratovalni tlak</b>	maks. 700 bar
<b>Material:</b>	jeklo
<b>Obseg dobave</b>	s hitro spojko, puša 3/8"-18 NPT



## Navodilo

Attention: Please observe separate safety precautions for working with 700 bar equipment (see technical information)!

## Opis

Valji z votlim batom so uporabljeni za tlačne in vlečne pomike.

Enostavna pritrnitev z navojem na ohišju valja

batni obročki preprečujejo onesnaženje

zamenljiva naležna glava

## Artikel

Opis	Hod		Površina (cm <sup>2</sup> )	A	B	C	D	E	F	H	I	J	K	L	M	N	R	S	T	Prostornina (cc)	Teža (kg)	
	(kN)	(t)		(mm)	(mm)	(mm)	(mm)	(mm)	(mm)	(mm)	(mm)	(mm)	(mm)	(mm)	(mm)	(mm)	(mm)	(mm)	(mm)			
HK SH 01204	121,0	12	40	17,6	124	164	20,5	75	55	40	19	2.3/4" -16	30	2,5	55	M28 x 1,5	7	5/16" -18	50,8	12	70	4,0
HK SH 01208	121,0	12	76	17,6	176	252	20,5	75	55	40	19	2.3/4" -16	30	2,5	55	M28 x 1,5	18	5/16" -18	50,8	12	134	4,8
HK SH 02215	217,0	22	150	32,0	318	468	27,0	105	75	56	23	3.7/8" -12	38	2,5	48	1.9/16" -16	8	3/8" -16	83,0	15	474	18,0
HK SH 03006	301,8	30	64	44,0	197	261	33,4	120	90	68	26	4.1/2" -12	42	4,0	55	1.13/16" -16	22	3/8" -16	92,2	17	281	13,2
HK SH 03015	301,8	30	150	44,0	322	472	33,0	120	90	68	26	4.1/2" -12	42	4,0	55	1.13/16" -16	9	3/8" -16	92,0	17	660	23,5
HK SH 06008	578,2	60	76	84,2	253	329	54,0	165	125	95	31	6.1/4" -12	48	4,0	80	2.3/4" -16	22	1/2" -13	130,3	14	640	32,3