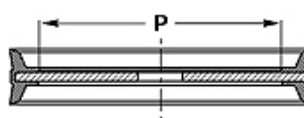
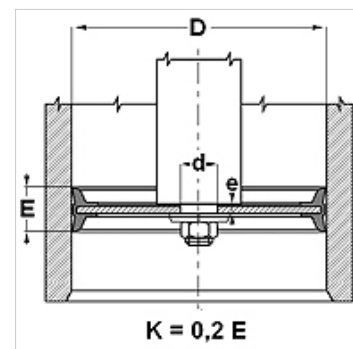


Lastnosti

Način izdelave	Komplet bata
Obratovalni tlak	do 10 bar
Drсна hitrost max.	1,0 m/s
Temperatura min.	-30 °C
Temperatura max.	110 °C
Sredstva	Mineralna olja voda-zrak
Montaža	z gumijasto stranjo natakните na nastavek batnice in pričrdite s podložko in matico.
Material:	85° Shore A NBR z jeklenim jedrom
Uporaba	pnevmatika



Toleranz / Tolerance		
D	d	E
H11	f8	± 0,50



Navodilo

Toleranca: D= H11; d= f8; E= +/-0,5

Opis

Komplet bata.

Navodila za naročanje

V primeru posebnih delovnih pogojev (tekočina, temperatura, tlak ...) nas, prosimo, pokličite.

Drug možni material: FPM, EPDM.

Artikel

Opis	D (mm)	d (mm)	P (mm)	E (mm)	e (mm)
TDOP 25	25	8	15,6	12	3,8
TDOP 32	32	8	20,0	15	3,8
TDOP 40	40	10	27,0	18	4,8
TDOP 50	50	10	37,0	18	4,8
TDOP 60	60	12	43,0	22	6,0
TDOP 63	63	12	43,0	22	6,0
TDOP 063-1	63	16	43,0	22	6,0
TDOP 65	65	12	43,0	25	6,0
TDOP 70	70	12	50,0	25	6,0
TDOP 80	80	16	55,0	24	6,0
TDOP 100	100	20	75,0	26	7,0
TDOP 125	125	20	95,0	26	9,6
TDOP 160	160	27	129,0	30	10,8
TDOP 200	200	27	169,0	35	11,4