

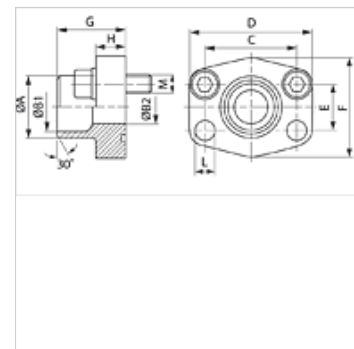
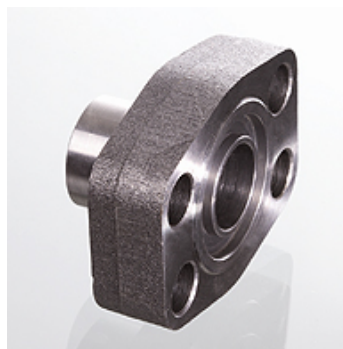
# AFS SRE (6000 PSI)

Varilni prirobnik SAE

**HANSA FLEX**

## Lastnosti

<b>Tlačna vrsta</b>	6000 psi
<b>Standard</b>	SAE J 518 C ISO 6162
<b>Oblika izdelave</b>	ravno
<b>Način izdelave</b>	varilni prirobnik SAE
<b>Pritrditev</b>	vijačna vrtina
<b>Obseg dobave</b>	samo prirobnica
<b>Material:</b>	S355J2G3 (ST52.3)
<b>Zaščita površine</b>	črno naoljeno



## Navodilo

Navedeni najvišji obratovalni tlak velja za prirobnico! Dejanski obratovalni tlak se določa na osnovi cevi (debeline stene) in na osnovi kvalitete cevi!

Priporočeni vijaki so navedeni v stolpcih M (metr) ali M (unc).

## Artikel

Opis	PB 10.9 (bar)	Velikost	Cev	A (mm)	B1 (mm)	B2 (mm)	G (mm)	C (mm)	E (mm)	H (mm)	L (mm)	M metr.	M unc
<b>AFS 401 SRE 20</b>	400	1/2"	20 x 3	20	14,0	14	34,0	40,5	18,2	16,0	9,0	M 8 x 30	5/16" x 1.1/4"
<b>AFS 402 SRE 20</b>	400	3/4"	20 x 3	20	14,0	14	35,0	50,8	23,8	21,0	11,0	M 10 x 35	3/8" x 1.1/2"
<b>AFS 402 SRE 25</b>	400	3/4"	25 x 4	25	17,0	17	35,0	50,8	23,8	21,0	11,0	M 10 x 35	3/8" x 1.1/2"
<b>AFS 403 SRE 25</b>	400	1"	25 x 4	25	17,0	17	42,0	57,2	27,8	25,0	13,0	M 12 x 45	7/16" x 1.1/2"
<b>AFS 403 SRE 30</b>	400	1"	30 x 4	30	22,0	22	42,0	57,2	27,8	25,0	13,0	M 12 x 45	7/16" x 1.1/2"
<b>AFS 404 SRE 30</b>	400	1.1/4"	30 x 4	30	22,0	22	44,0	66,7	31,8	25,0	15,0	M 14 x 50	1/2" x 1.3/4"
<b>AFS 404 SRE 38</b>	400	1.1/4"	38 x 6	38	26,0	26	44,0	66,7	31,8	25,0	15,0	M 14 x 50	1/2" x 1.3/4"
<b>AFS 405 SRE 38</b>	400	1.1/2"	38 x 6	38	26,0	26	56,0	49,4	36,5	28,0	17,0	M 16 x 50	5/8" x 2"
<b>AFS 405 SRE 48</b>	400	1.1/2"	48,3 x 8	49	32,0	32	56,0	79,4	36,5	28,0	17,0	M 16 x 50	5/8" x 2"
<b>AFS 405 SRE 60</b>	400	1.1/2"	60,3 x 10	61	40,0	40	56,0	79,4	36,5	27,0	17,0	M 16 x 50	5/8" x 2"
<b>AFS 406 SRE 60</b>	400	2"	60,3 x 10	61	40,0	40	65,0	96,8	44,5	37,0	21,0	M 20 x 70	3/4" x 2.1/2"
<b>AFS 406 SRE 76</b>	400	2"	76,1 x 12,5	76	50,0	48	80,0	96,8	44,5	33,0	21,0	M 20 x 65	3/4" x 2.1/2"

PN = nazivni tlak PB = maks. obratovalni tlak

## Variante izdelka

**AFS SRE M (3000 / 6000 PSI)** Varilni prirobnik SAE, s kompletom metričnih vijakov in tesnilnim obročem

**AFS SRE U (3000 / 6000 PSI)** Varilni prirobnik SAE, z UNC vijaki in tesnilnim obročem