

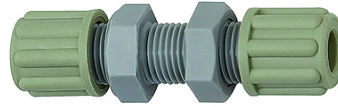
K-SCHOTTVERBINDUNGEN

Bulkhead couplings

HANSA FLEX

Lastnosti

| | |
|-----------------------|---|
| Obratovni tlak | Dependent on operating temperature; Max. 10 bar (at 20 °C); Max. 1 bar (at 60 °C) |
| navojno ohišje | Polyamide (PA) |
| zatični obroč | Polypropylene (PP) |
| matica | Polypropylene (PP) |



Navodilo

Drugi podatki na zahtevo.

Opis

Manufactured from high impact-resistant, UV-stabilised engineering plastic, extremely resistant to weathering. Good chemical resistance to benzene, diesel oil, fuel oil and alkalis.
Not suitable for use with acids.

Artikel

| Opis | Navoj | za cev | L1 (mm) | zev ključa |
|----------------|------------|--------------|------------|------------|
| K- 07 40 32 74 | M 10 x 1 | 4 mm / 6 mm | 53,0 | 14 mm |
| K- 07 40 32 75 | M 14 x 1,5 | 6 mm / 8 mm | 64,0 | 19 mm |
| K- 07 40 32 76 | M 16 x 1,5 | 8 mm / 10 mm | 73,0 | 22 mm |
| K- 07 40 32 77 | M 18 x 1,5 | 9 mm / 12 mm | 84,0 | 24 mm |