

# K-MV MS

Pressure gauge fittings with female thread

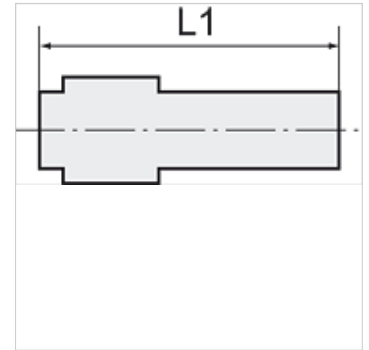
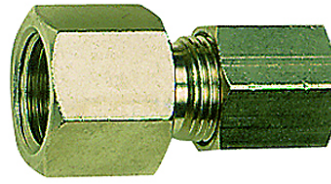
**HANSA FLEX**

## Lastnosti

tlačno območje Max. 60 bar

temperatura Max. 150 °C

Material: ponikljana medenina



## Navodilo

Drugi podatki na zahtevo.

## Artikel

Opis	zunANJI Ø cevi	Navoj	L1 (mm)	zEV ključa	zEV ključa 1 (mm)
K- 07 40 20 36	4 mm	G 1/8	24,5	14 mm	10
K- 07 40 20 37	6 mm	G 1/8	25,5	14 mm	12
K- 07 40 20 38	8 mm	G 1/8	26,5	14 mm	14
K- 07 40 20 39	6 mm	G 1/4	30,0	17 mm	12
K- 07 40 20 40	8 mm	G 1/4	31,0	17 mm	14
K- 07 40 20 41	10 mm	G 1/4	35,5	17 mm	19
K- 07 40 20 42	8 mm	G 3/8	31,0	20 mm	14
K- 07 40 20 43	10 mm	G 3/8	36,5	20 mm	19
K- 07 40 20 44	12 mm	G 3/8	36,0	20 mm	22
K- 07 40 20 45	12 mm	G 1/2	39,5	24 mm	22
K- 07 40 20 46	15 mm	G 1/2	40,0	24 mm	27
K- 07 40 20 47	18 mm	G 1/2	42,0	26 mm	32