

K-SCHOTTNIPPEL ES

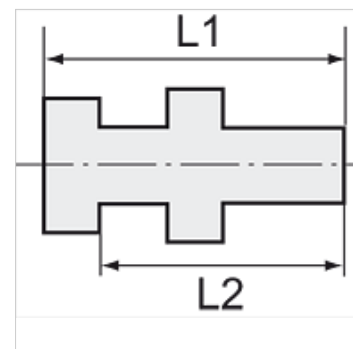
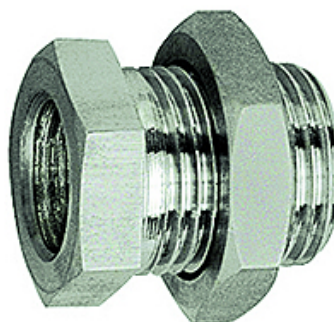
Bulkhead nipples

HANSA FLEX

Lastnosti

delovni tlak Max. 20 bar

Material: legirano jeklo 1.4571



Navodilo

The dimensions of the standard screw fittings may change slightly during the life of the catalogue as a result of optimisation processes.

Drugi podatki na zahtevo.

Dodatne informacije

Further types and dimensions on request.

Artikel

Opis	zunanji navoj	notranji navoj	L1 (mm)	L2 (mm)	zev ključa 1 (mm)	zev ključa 2 (mm)
K- 07 40 34 24	G 1/4	G 1/8	18,0	14,0	17	17
K- 07 40 34 25	G 3/8	G 1/4	22,0	17,0	19	24
K- 07 40 34 26	G 1/2	G 3/8	27,0	21,0	24	24