

# K-VSTOK VALUE LINE MS NI

Plugs, incl. NBR-O-ring

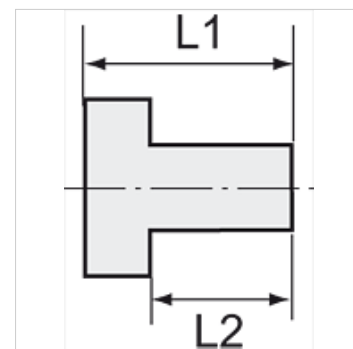
**HANSA FLEX**

## Lastnosti

maks. delovni tlak 60 bar

maks. delovna temperatura 80 °C

Material: ponikljana medenina



## Navodilo

The dimensions of the standard screw fittings may change slightly during the life of the catalogue as a result of optimisation processes.

Drugi podatki na zahtevo.

## Opis

For air, water, steam, oil, etc.

## Artikel

Opis	Navoj	inbus (mm)	L1 (mm)	L2 (mm)
K- 07 40 40 09	M 5	2,5	7,2	4,5
K- 07 40 40 10	G 1/8	5,0	9,5	6,5
K- 07 40 40 11	G 1/4	6,0	11,5	8,0
K- 07 40 40 12	G 3/8	8,0	12,5	9,0
K- 07 40 40 13	G 1/2	10,0	14,0	10,0