

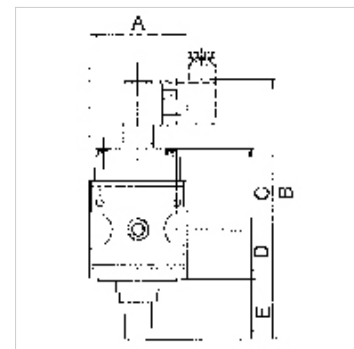
K-SCHALTVENTILE 3/2 MULTIFIX

On-off valves (3/2-way valves)

HANSA FLEX

Lastnosti

vstopni tlak	Min. 2 bar, max. 10 bar
temperatura medija	max. 60 °C
temperatura okolice	Max. 60 °C
Električni priključek	Device plug PG 9, type B, EN 175301-803
razred zaščite	IP 65 (P 54) acc. to DIN 40050
relativno trajanje vklopa	100 %
odzračevalni priključek	Silencer G 1/4
tesnilni material	NBR
ohišje	Die-cast zinc
meritev pretoka	At P1 = 6 bar and pressure drop $\Delta p = 1$ bar



Navodilo

Drugi podatki na zahtevo.

Opis

Pneumatic systems or parts of systems can be switched on and off by means of an electrical signal. When they are switched off, the system is relieved at the same time.

Navodila za naročanje

On-off valves are also available in a pneumatically operated version. Please ask for more information.

Artikel

Opis	Navoj	pretok (L/min)	magnetna tuljava	A (mm)	B	C (mm)	D (mm)	E (mm)	Velikost
K- 07 25 11 65	G 1/4	900	24 V AC, 50 Hz	47,8	138,7 mm	43,7	26,0	17,5	1
K- 07 25 11 66	G 1/4	900	230 V AC, 50 Hz	47,8	138,7 mm	43,7	26,0	17,5	1
K- 07 25 11 67	G 1/4	900	110 V AC, 50 Hz	47,8	138,7 mm	43,7	26,0	17,5	1
K- 07 25 11 68	G 1/4	900	24 V DC	47,8	138,7 mm	43,7	26,0	17,5	1
K- 07 25 11 69	G 1/2	4000	24 V AC, 50 Hz / 12 V DC	68,8	185,0 mm	56,2	33,5	44,1	2
K- 07 25 11 70	G 1/2	4000	230 V AC, 50 Hz	68,8	185,0 mm	56,2	33,5	44,1	2
K- 07 25 11 71	G 1/2	4000	110 V AC, 50 Hz	68,8	185,0 mm	56,2	33,5	44,1	2
K- 07 25 11 72	G 1/2	4000	24 V DC	68,8	185,0 mm	56,2	33,5	44,1	2

Pribor

K-SCHALLDAE SINTERBR GE MS1 Silencers, sintered bronze, with brass hexagon nut and brass thread

Nadomestni deli

K-KOPPELPAKET MEHR	Coupling packet
K-KOPPELPAKET SCHMA	Coupling packet
K-GERAETESTECKER	Coupling socket
K-HALTERBAUSATZ MULTIFIX	Holder
K-MAGNETSPULE MULTIFIX	Solenoid
K-WV 3/2 VORSTEU HAND MULTIFIX	3/2-way valve