

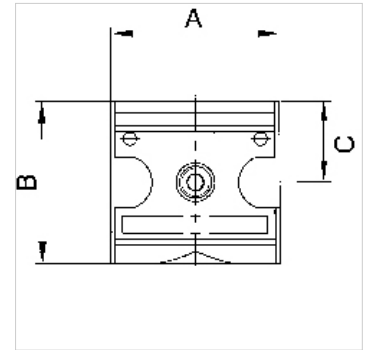
# K-VT BREIT MULTIFIX

Manifolds - wide design

**HANSA FLEX**

## Lastnosti

|                     |  |
|---------------------|--|
| vstopni tlak        | Max. 16 bar  |
| temperatura medija  | max. 60 °C   |
| temperatura okolice | Max. 60 °C   |
| tesnilni material   | NBR  |
| ohišje              | Die-cast zinc                                      |
| meritev pretoka     | At P1 = 6 bar and pressure drop $\Delta p = 1$ bar |



## Navodilo

Flow rate l/min at P → A  
Drugi podatki na zahtevo.

## Opis

Wide or narrow, four-way manifolds.

## Artikel

| Opis           | Outlets          | Navoj | pretok (L/min) | A (mm) | B       | C (mm) | Velikost |
|----------------|------------------|-------|----------------|--------|---------|--------|----------|
| K- 07 25 11 73 | 4 x 1/4          | G 1/4 | 2500           | 47,8   | 52,0 mm | 26,0   | 1        |
| K- 07 25 11 74 | 4 x 1/4          | G 3/8 | 2500           | 47,8   | 52,0 mm | 26,0   | 1        |
| K- 07 25 11 75 | 2 x 1/4, 2 x 1/2 | G 1/2 | 11000          | 68,8   | 67,0 mm | 33,5   | 2        |
| K- 07 25 11 76 | 2 x 1/4, 2 x 1/2 | G 3/4 | 11000          | 68,8   | 67,0 mm | 33,5   | 2        |

## Pribor

|                                     |   |
|-------------------------------------|---|
| K-DRS WECHSELKONTAK ANFLANSCHBAR DS | Pressure switches, changeover type, suitable for flange mounting K-07302861 |
| K-ZUBEH HANSA                       | Accessories for pressure switch HANSA                                       |

## Nadomestni deli

|                     |                 |
|---------------------|-----------------|
| K-KOPPELPAKET MEHR  | Coupling packet |
| K-KOPPELPAKET SCHMA | Coupling packet |