

# K-ANFAV VARIOBLOC

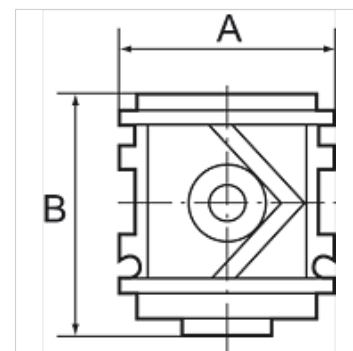
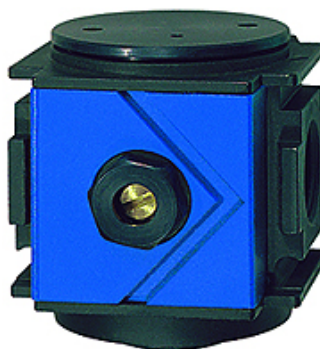
Manifolds

**HANSA FLEX**

## Lastnosti

Obratovalni tlak 2 - 25 bar

meritev pretoka At P1 = 6 bar and pressure drop  $\Delta p = 1$  bar



## Navodilo

Drugi podatki na zahtevo.

## Opis

For slow pressure build-up in pneumatic systems, e.g. after an emergency stop. The valve opens to full flow at approximately 60% of the set operating pressure. The filling time can be set by turning the adjusting screw. Used in combination with multi-piece service units.

## Artikel

| Opis           | Navoj | pretok (L/min) | A (mm) | B       | Obratovalni tlak bar |
|----------------|-------|----------------|--------|---------|----------------------|
| K- 07 25 11 84 | G 1/4 | 1200           | 48,0   | 54,0 mm | 2 - 25 bar           |
| K- 07 25 11 85 | G 3/8 | 1400           | 48,0   | 54,0 mm | 2 - 25 bar           |
| K- 07 25 11 86 | G 1/2 | 3800           | 70,0   | 72,0 mm | 2 - 25 bar           |
| K- 07 25 11 87 | G 3/4 | 4200           | 70,0   | 72,0 mm | 2 - 25 bar           |
| K- 07 25 11 88 | G 1   | 4200           | 124,0  | 72,0 mm | 2 - 25 bar           |