

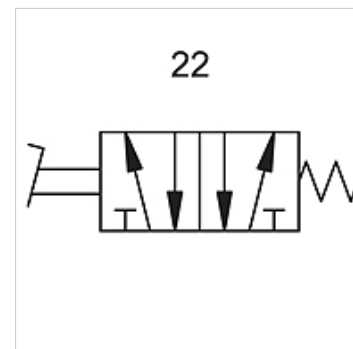
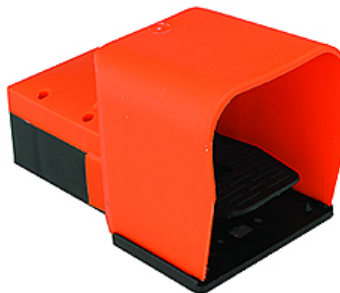
# K-WFV 5/2 NICHT RASTEND FUS

5/2-way foot-operated valves (monostable, non-latching, with foot guard)

**HANSA FLEX**

## Lastnosti

Obratovalni tlak	2.5 - 10 bar
območje temperatur:	-10 °C to +60 °C
pretok pri 6,3 bar in $\Delta$ 0,5 bar	60 NI/min (4 mm and M5), 640 NI/min (G 1/4)
pretok pri 6,3 bar in $\Delta$ 1 bar	95 NI/min (4 mm and M5), 840 NI/min (G 1/4)



## Navodilo

Drugi podatki na zahtevo.

## Opis

Foot-operated valves, 3/2- and 5/2-way types, bistable or monostable (non-latching).

## Artikel

Opis	Priključek	številka vezalne sheme
K- 07 15 01 91	G 1/4	22