

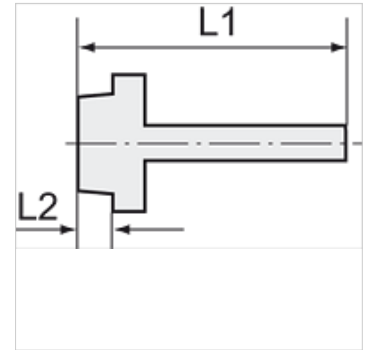
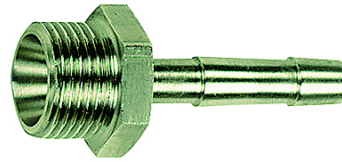
K-TR AG MS NI

Male hose fittings, parallel male thread - nickel plated brass

HANSA FLEX

Lastnosti

delovna temperatura	Max. 150 °C
tlak	Max. 60 bar
Material:	ponikljana medenina



Navodilo

The dimensions of the standard screw fittings may change slightly during the life of the catalogue as a result of optimisation processes. Drugi podatki na zahtevo.

Opis

Suitable for air, water, oil, steam, etc.

Dodatne informacije

Further types and dimensions on request.

Artikel

Opis	Navoj	za cev	L1 (mm)	L2 (mm)	zev ključa
K- 07 40 49 72	G 1/8	LW 6 mm	36,0	7,0	14 mm
K- 07 40 49 73	G 1/8	LW 8 mm	36,0	7,0	14 mm
K- 07 40 49 74	G 1/8	LW 9 mm	36,0	7,0	14 mm
K- 07 40 49 15	G 1/4	LW 4 mm	36,0	9,0	17 mm
K- 07 40 49 18	G 1/4	LW 6 mm	39,0	9,0	17 mm
K- 07 40 49 19	G 1/4	LW 8 mm	39,0	9,0	17 mm
K- 07 40 49 23	G 1/4	LW 9 mm	39,0	9,0	17 mm
K- 07 40 49 24	G 1/4	LW 10 mm	39,0	9,0	17 mm
K- 07 40 49 25	G 1/4	LW 13 mm	42,0	9,0	17 mm
K- 07 40 49 28	G 3/8	LW 8 mm	39,0	9,0	19 mm
K- 07 40 49 32	G 3/8	LW 9 mm	39,0	9,0	19 mm
K- 07 40 49 33	G 3/8	LW 10 mm	39,0	9,0	19 mm
K- 07 40 49 35	G 3/8	LW 13 mm	42,0	9,0	19 mm
K- 07 40 49 38	G 1/2	LW 8 mm	42,0	11,0	24 mm
K- 07 40 49 41	G 1/2	LW 9 mm	42,0	11,0	24 mm
K- 07 40 49 42	G 1/2	LW 10 mm	42,0	11,0	24 mm
K- 07 40 49 47	G 1/2	LW 13 mm	45,0	11,0	24 mm
K- 07 40 49 48	G 1/2	LW 16 mm	53,0	11,0	24 mm
K- 07 40 49 49	G 1/2	LW 19 mm	53,0	11,0	24 mm
K- 07 40 49 50	G 3/4	LW 13 mm	51,0	12,0	32 mm
K- 07 40 49 51	G 3/4	LW 16 mm	51,0	12,0	32 mm
K- 07 40 49 53	G 3/4	LW 19 mm	54,0	12,0	32 mm
K- 07 40 49 55	G 3/4	LW 25 mm	54,0	12,0	32 mm
K- 07 40 49 60	G 1	LW 25 mm	49,0	15,0	34 mm
K- 07 40 49 68	G 1	LW 32 mm	55,0	13,0	38 mm