

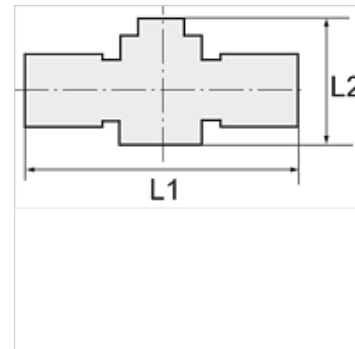
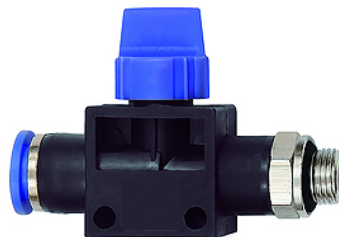
# K-WV 3/2 STECK GEW SCHL

3/2-way pilot valves with male thread and plug connection, flow direction from port to tube, parallel male thread with O-ring

**HANSA FLEX**

## Lastnosti

<b>delovni tlak</b>	Max. 15 bar, coarse vacuum
<b>Območje uporabe</b>	Air, vacuum
<b>priporočene cevi</b>	PU or PA (nylon)
<b>Sredstva</b>	Compressed air and all gases or liquids that are compatible with the materials
<b>območje temperatur:</b>	-20 °C to +80 °C
<b>tesnilna ploskev</b>	Parallel version: O-ring in housing, Conical version: thread coating
<b>Material:</b>	Plastic, Nickel plated brass
<b>potisni obroč</b>	Plastic



## Navodilo

Drugi podatki na zahtevo.

## Opis

Push-in fittings series manufactured in plastic and nickel-plated brass. All parts are suitable for use with hoses, tubes or pipes made of plastic and copper.

## Artikel

Opis	Navoj	za zunanji Ø mm cevi	L1 (mm)	L2 (mm)	zev ključa
K- 07 40 43 85	G 1/8	6 mm	58,1	41,5	14 mm
K- 07 40 43 86	G 1/8	8 mm	58,5	41,5	14 mm
K- 07 40 43 83	G 1/4	6 mm	59,6	41,5	14 mm
K- 07 40 43 84	G 1/4	8 mm	60,0	41,5	17 mm
K- 07 40 43 81	G 1/4	10 mm	70,9	46,0	17 mm
K- 07 40 43 82	G 1/4	12 mm	70,9	46,0	21 mm
K- 07 40 43 89	G 3/8	6 mm	61,1	41,5	14 mm
K- 07 40 43 90	G 3/8	8 mm	61,5	41,5	17 mm
K- 07 40 43 87	G 3/8	10 mm	72,4	46,0	20 mm
K- 07 40 43 88	G 3/8	12 mm	71,9	46,0	21 mm
K- 07 40 43 79	G 1/2	10 mm	74,9	46,0	24 mm
K- 07 40 43 80	G 1/2	12 mm	75,4	46,0	24 mm