

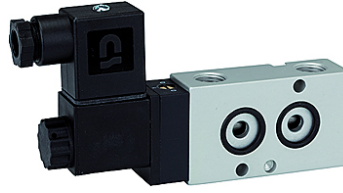
K-WV 3/2 LB NAMUR GETAUSCHT

3/2-way spool valves with NAMUR style interface, NC, ports 1 and 3 or 2 and 3 swapped

HANSA FLEX

Lastnosti

Sredstva	Air, neutral gases, filtered
delovni tlak	1.5 to 10 bar
delovna temperatura	-20 °C to +70 °C
Električni priključek	Plug connector PG 9
v obsegu dobave	Plug connector PG 9, 1 coding pin, 2 O-rings, 2 fixing screws
potrebna moč	3 W=5 VA~
ohišje	Aluminium, anodised
drsnik	Stainless steel
tesnilni material	NBR



Navodilo

Drugi podatki na zahtevo.

Opis

3/2 and 5/2-way spool valves, monostable, with air purging function and pneumatic spring return. With latching manual operator and optional outgoing air restriction.

Two or three-piece service units with excellent flow rates in modern design.
Lockable diaphragm pressure regulator with secondary ventilation, oil can be filled without interrupting operation.

Artikel

Opis	Napetost	Priključek	DN	pretok (L/min)
K- 07 15 00 05	230 V, 50 Hz	G 1/4	7	1250
K- 07 15 00 06	24 V DC	G 1/4	7	1250