

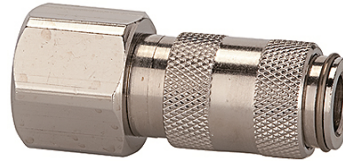
# K-SVKM NW 2,7 IG MS NI

Quick disconnect couplings DN 2.7, nickel-plated brass, female

**HANSA FLEX**

## Lastnosti

Obratovalni tlak	0 - 35 bar, maximum static working pressure (non-pulsating)
pretok zraka	165 l/min (at 6 bar and $\Delta p = 0.5$ bar)
temperatura medija	-20 °C to +100 °C
ohišje, puša, ohišje ventila	Nickel-plated brass
vzmet, notranji zaskočnik, krogle	stain less steel
tesnilni material	NBR



## Navodilo

Drugi podatki na zahtevo.

## Opis

One-hand quick disconnect coupling, one side sealing, extremely compact, with a large bore and a small pressure drop. Ideal for: Medical & Dental equipment, instrumentation and control, laboratory equipment, chemical applications, small tools, analysis, miniature pneumatics, engineering.

## Artikel

Opis	Priključek	dolžina (mm)	SW (mm)
K- 07 35 06 20	M 5 female	25,0	9
K- 07 35 06 21	G 1/8 female	28,0	12