

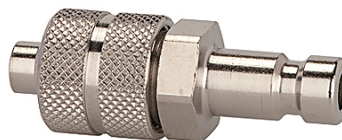
K-NIPPEL NW2,7 SCHL MS NI

Plugs DN 2.7, nickel-plated brass, for hose

HANSA FLEX

Lastnosti

| | |
|--------------------|---|
| Obratovalni tlak | 0 - 35 bar, maximum static working pressure (non-pulsating) |
| temperatura medija | -20 °C to +100 °C |
| Material: | ponikljana medenina |



Navodilo

Drugi podatki na zahtevo.

Artikel

| Opis | definicija | SW (mm) |
|----------------|-------------------|------------|
| K- 07 35 01 04 | Plug for hose 4x3 | 7 |
| K- 07 35 01 05 | Plug for hose 5x3 | 7 |
| K- 07 35 01 06 | Plug for hose 6x4 | 8 |