

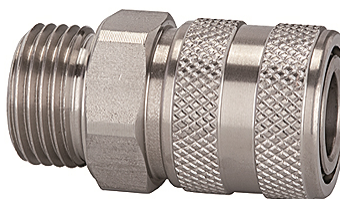
K-SVKM NW 7,2 AG VA

Quick disconnect couplings DN 7.2, stainless steel, male

HANSA FLEX

Lastnosti

Obratovalni tlak	1 - 35 bar and rough vacuum
pretok zraka	1.000 l/min (at 6 bar and $\Delta p = 0.5$ bar)
temperatura medija	-25 °C to +200 °C
ohišje, puša, ohišje ventila	Stainless steel 1.4305
vzmet, notranji zaskočnik	Stainless steel 1.4310
blokirni zatiči	Stainless steel 1.4401
tesnilni material	FKM



Navodilo

Drugi podatki na zahtevo.

Opis

Classic standard coupling type, one side sealing, made of stainless steel. The closed sleeve protects the coupling from dirt. We recommend the use of stainless steel plugs and stems!

Artikel

Opis	Priključek	dolžina (mm)	SW (mm)
K- 07 35 07 59	G 1/4 male	43,0	22
K- 07 35 07 60	G 3/8 male	43,0	22
K- 07 35 07 61	G 1/2 male	46,0	24

Dodatni elementi

K-NIPPEL KUPPL NW7 AG VA 2	Plugs for couplings DN 7.2 - DN 7.8, stainless steel 1.4305, male
K-NIPPEL KUPPL NW7 IG VA 1	Plugs for couplings DN 7.2 - DN 7.8, stainless steel 1.4305, female
K-TUE 7,2 7,8 VA 2	Stems for couplings DN 7.2 - DN 7.8, stainless steel 1.4305