

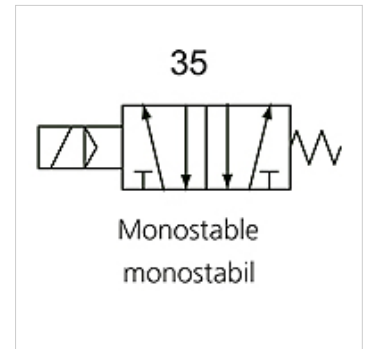
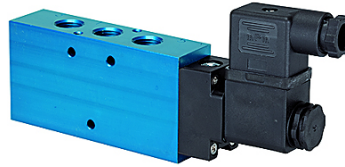
# K-WV 5/2 EINS ELEKTRO

5/2-way spool valves, single solenoid

**HANSA FLEX**

## Lastnosti

funkcija	5/2-way
Obratovalni tlak	2.5 - 10 bar; Max. vacuum 10 bar (external pilot air)
min. delovni tlak	2,5 bar
območje temperatur:	-10 °C to +60 °C
pretok 6 bar in 10 bar	1500 NI/min (G 1/4), 4600 NI/min (G 1/2)
Električni priključek	Coupler plug PG 9 - form B
razred zaščite	IP 65 (DIN 46244)
ohišje	Anodised aluminium, blue
drsnik bata	Stainless steel
tesnilni material	NBR



## Navodilo

Drugi podatki na zahtevo.

## Opis

This valve design, featuring the Tapered Tee Seal®, offers the ability to run without lubrication and supports almost any compressed air quality. The valves are largely resistant to dirt and can thus also be used under extreme conditions without any problems. Leakage is now a thing of the past and the spool no longer sticks, even after long idle periods.

## Artikel

Opis	Priključek	Napetost	DN	številka vezalne sheme	Krmiljenje
K- 07 15 02 21	G 1/4	24 V DC	8	35	
K- 07 15 02 22	G 1/2"	24 V DC	15	35	
K- 07 15 02 23	G 1/4	230 V AC, 50 Hz	8	35	
K- 07 15 02 24	G 1/2"	230 V AC, 50 Hz	15	35	