

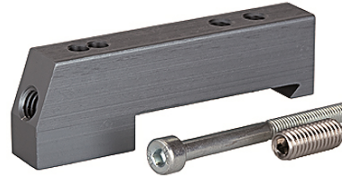
K-ADA HUTPROFIL

Adapter for DIN rail

HANSA FLEX

Lastnosti

Sredstva	Filtered, unlubricated or lubricated compressed air. If lubrication is used, it must be continuous.
delovni tlak	Max. vacuum 10 bar (external pilots), 3 to 7 bar (internal pilots as standard)
krmilni tlak	3 - 7 bar
območje temperatur:	-10 °C to +60 °C
pretok	200 NI/min (Ø 4), 500 NI/min (Ø 6), 800 NI/min (Ø 8)
število krmilnikov	Max. 16 (e.g. 16 spring return valves)
pomožna ročna sprožitev	Latching (bistable), Monostable (non-latching) version also available on request
potrebna moč	0.6 W per pilot
razred zaščite	IP 65



Navodilo

Drugi podatki na zahtevo.

Opis

These compact valve terminals, with a maximum flow rate of 800 NI/min, can be individually adapted to the specific conditions of each application thanks to the wide range of functions and various input and intermediate plates. Since each valve terminal is a customer-specific combination of a series of individual elements, the catalogue only lists the available input, intermediate and end plates as well as the different valve discs and the 25-pin multi-pole connectors.

Dodatne informacije

Important: The scope of supply does not include a connector. Please order separately.

Artikel

Opis	definicija
K- 07 15 22 43	Adapter for DIN rail