

K-WV 5/3 ELEKTROPNEU ZENT ENTLUEF4V

5/3-way pilot valve, mid-position exhausted

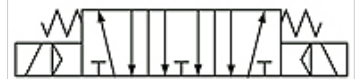
HANSA FLEX

Lastnosti

| | |
|-----------------------|--|
| Obratovalni tlak | 1.5 - 8 bar |
| območje temperatur: | -20 °C to +70 °C |
| meritev pretoka | At P1 = 8 bar, P2 = 6 bar and pressure drop $\Delta p = 1$ bar |
| Električni priključek | Connector Type B acc. to ISO 4400 |
| min. delovni tlak | 1,5 bar |
| razred zaščite | IP 65 |
| ohišje ventila | Aluminium alloy |



38



Mid-position exhausted
Zentrum entlüftet

Navodilo

Drugi podatki na zahtevo.

Artikel

| Opis | Priključek | odzračevalni priključek | pretok (L/min) | številka vezalne sheme | Napetost | Velikost |
|----------------|------------|-------------------------|----------------|------------------------|--------------|----------|
| K- 07 15 03 89 | M 5 | M 5 | 250 | 38 | 24 V DC | 100 |
| K- 07 15 03 90 | G 1/8 | G 1/8 | 400 | 38 | 24 V DC | 100 |
| K- 07 15 03 91 | G 1/8 | G 1/8 | 550 | 38 | 24 V DC | 200 |
| K- 07 15 03 92 | G 1/4 | G 1/8 | 550 | 38 | 24 V DC | 200 |
| K- 07 15 03 93 | G 1/4 | G 1/4 | 950 | 38 | 24 V DC | 300 |
| K- 07 15 03 94 | G 3/8 | G 1/4 | 950 | 38 | 24 V DC | 300 |
| K- 07 15 03 95 | G 1/2" | G 1/2 | 1600 | 38 | 24 V DC | 400 |
| K- 07 15 03 96 | M 5 | M 5 | 250 | 38 | 230 V, 50 Hz | 100 |
| K- 07 15 03 97 | G 1/8 | G 1/8 | 400 | 38 | 230 V, 50 Hz | 100 |
| K- 07 15 03 98 | G 1/8 | G 1/8 | 550 | 38 | 230 V, 50 Hz | 200 |
| K- 07 15 03 99 | G 1/4 | G 1/8 | 550 | 38 | 230 V, 50 Hz | 200 |
| K- 07 15 04 00 | G 1/4 | G 1/4 | 950 | 38 | 230 V, 50 Hz | 300 |
| K- 07 15 04 01 | G 3/8 | G 1/4 | 950 | 38 | 230 V, 50 Hz | 300 |
| K- 07 15 04 02 | G 1/2" | G 1/2 | 1600 | 38 | 230 V, 50 Hz | 400 |