

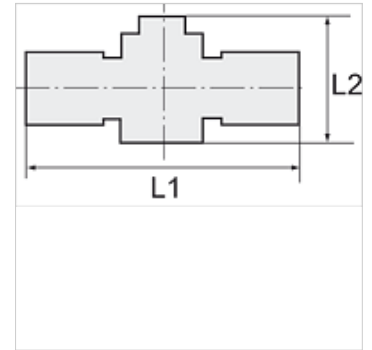
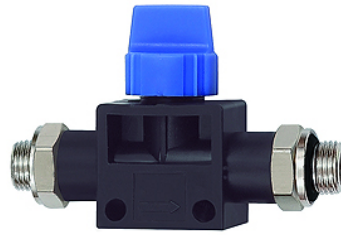
K-WV 3/2 AG OR

3/2-way pilot valves with parallel male thread with O-ring

HANSA FLEX

Lastnosti

delovni tlak	Max. 15 bar, coarse vacuum
Območje uporabe	Air, vacuum
priporočene cevi	PU or PA (nylon)
Sredstva	Compressed air and all gases or liquids that are compatible with the materials
območje temperatur:	-20 °C to +80 °C
tesnilna ploskev	Parallel version: O-ring in housing, Conical version: thread coating
Material:	Plastic, Nickel plated brass
potisni obroč	Plastic



Navodilo

Drugi podatki na zahtevo.

Opis

Push-in fittings series manufactured in plastic and nickel-plated brass. All parts are suitable for use with hoses, tubes or pipes made of plastic and copper.

Artikel

Opis	navoj 1	navoj 2	L1 (mm)	L2 (mm)
K- 07 40 46 28	G 1/8	G 1/8	65,0	41,5
K- 07 40 46 27	G 1/4	G 1/4	68,0	41,5
K- 07 40 46 29	G 3/8	G 3/8	81,5	46,0