

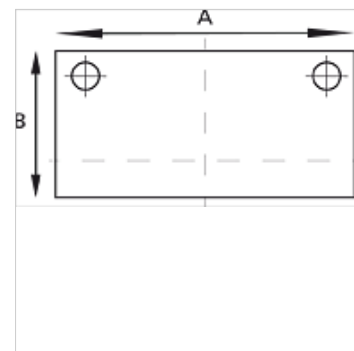
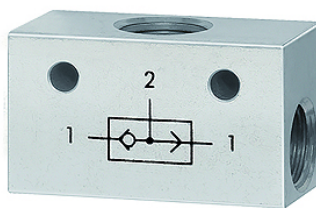
# K-ODER-VENTIL

OR valves

**HANSA FLEX**

## Lastnosti

|                                      |   |
|--------------------------------------|---|
| Obratovalni tlak                     | 2 - 10 bar                              |
| območje temperatur:                  | -10 °C to +80 °C                        |
| pretok pri 6,3 bar in $\Delta$ 1 bar | 500 NI/min (G 1/8), 1300 NI/min (G 1/4) |
| ohišje ventila                       | aluminij                                |
| krogla                               | Stainless steel                         |
| tesnila                              | NBR                                     |



## Navodilo

Drugi podatki na zahtevo.

## Opis

The valve has two inlets and one outlet. A signal appears at the outlet when the left or right inlet is pressurised. <br>If the pressure at the two inlets is different, the stronger of the two signals appears at the outlet.

## Artikel

| Opis           | Navoj     | A<br>(mm) | B<br>(mm) |
|----------------|-----------|-----------|-----------|
| K- 07 15 26 05 | 3 x G 1/8 | 36,0      | 20,0      |
| K- 07 15 26 04 | 3 x G 1/4 | 43,0      | 25,0      |