

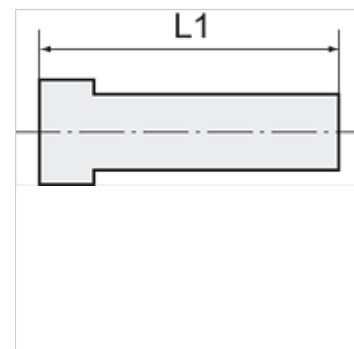
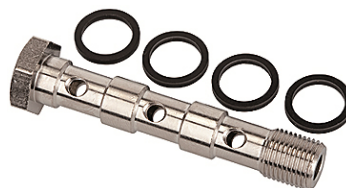
K-HS DREIFACH

Banjo bolts, triple

HANSA FLEX

Lastnosti

delovni tlak	Max. 16 bar
delovna temperatura	-20 °C to +70 °C
Material:	ponikljana medenina



Navodilo

Drugi podatki na zahtevo.

Artikel

Opis	Navoj	L1 (mm)	zev ključa
K- 07 40 26 80	G 1/8	60,0	14 mm
K- 07 40 26 79	G 1/4	70,5	17 mm
K- 07 40 26 81	G 3/8	80,0	19 mm