

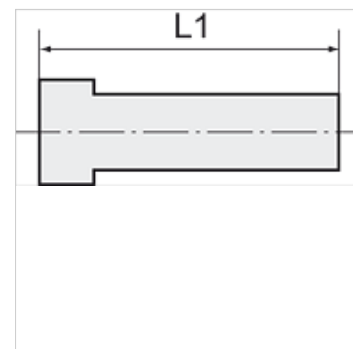
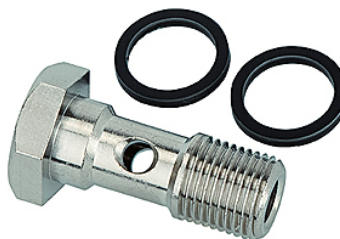
K-HS EINFACH

Banjo bolts, single

HANSA FLEX

Lastnosti

delovni tlak	Max. 16 bar
delovna temperatura	-20 °C to +70°C
Material:	ponikljana medenina



Navodilo

Drugi podatki na zahtevo.

Artikel

Opis	Navoj	L1 (mm)	zev ključa
K- 07 40 26 72	M 5	17,5	8 mm
K- 07 40 26 74	G 1/8	28,0	14 mm
K- 07 40 26 73	G 1/4	33,0	17 mm
K- 07 40 26 75	G 3/8	36,0	19 mm