

K-W90 STUECK IG IG

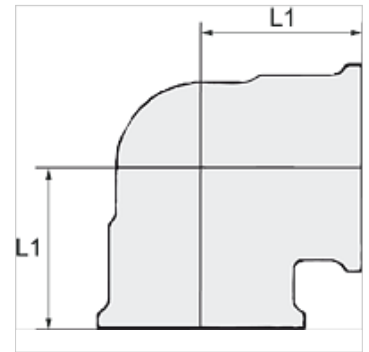
90° elbows, female/female

HANSA FLEX

Lastnosti

Obratovalni tlak maks. 10 bar

delovna temperatura Max. 90 °C



Navodilo

Drugi podatki na zahtevo.

Artikel

Opis	Navoj	L1 (mm)
K- 07 40 45 45	G 1/8	17,5
K- 07 40 45 46	G 1/4	17,5
K- 07 40 45 47	G 3/8	20,0
K- 07 40 45 48	G 1/2	25,0
K- 07 40 45 49	G 3/4	30,0
K- 07 40 45 50	G 1	33,0
K- 07 40 45 51	G 1 1/4	45,0
K- 07 40 45 52	G 1 1/2	48,0
K- 07 40 45 53	G 2	60,0