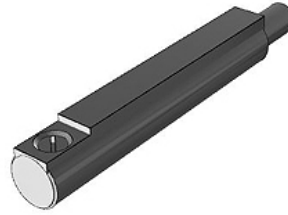


# K-REED-SCHALTER D

Reed switch D

## Lastnosti

električni vhod	axial
dolžina kabla	3 m
serija	D



## Opis

Reed switch, series D-A93, direct mounting in round profile groove, version: electrical input port axial, with LED, with cast-in cable, cable length 3.0 m

## Artikel

Opis	Izvedba	definicija
K- 07 50 00 01	with LED, with grommet, without connector	Reed-switch
K- 07 50 00 02	with LED, with M8 connector (3 pin)	Reed-switch