

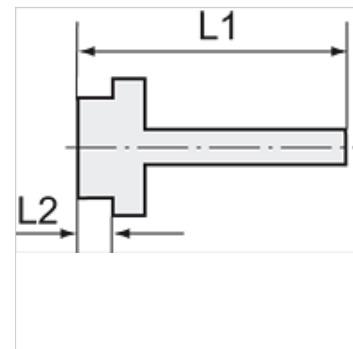
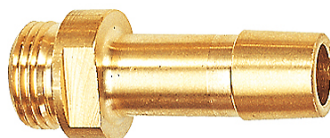
K-EST 12 MS

Male stems for coupling NW12 MS

HANSA FLEX

Lastnosti

delovni tlak	10 bar
temperatura medija	max. +90 °C
temperatura okolice	Max. +90 °C
Material:	Brass with a bare metal surface



Navodilo

The dimensions of the standard screw fittings may change slightly during the life of the catalogue as a result of optimisation processes.
Drugi podatki na zahtevo.

Dodatne informacije

Further types and dimensions on request.

Artikel

Opis	Navoj	za cev	L1 (mm)	L2 (mm)	zev ključa
K- 07 35 00 88	G 1/2	LW 16 mm	58,0	10,0	20 mm