

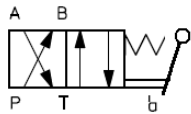
HK 41 C1

Handwegeventil NG6

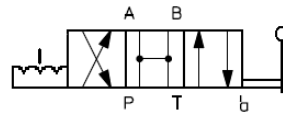
Manual operated valve Size 6



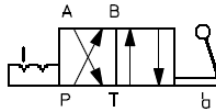
Schaltensymbole, Ausführungen / Symbols, Design



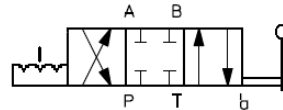
HK 41 3451 0204 C1



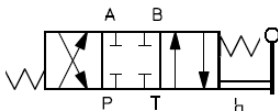
HK 41 3401 0705 C1



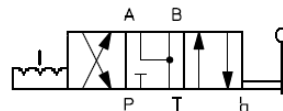
HK 41 3451 0905 C1



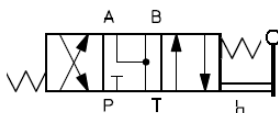
HK 41 3403 0705 C1



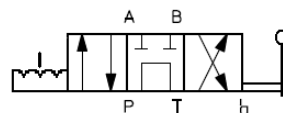
HK 41 3403 0304 C1



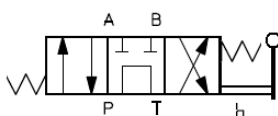
HK 41 3408 0705 C1



HK 41 3408 0304 C1



HK 41 3407 0705 C1



HK 41 3407 0304 C1

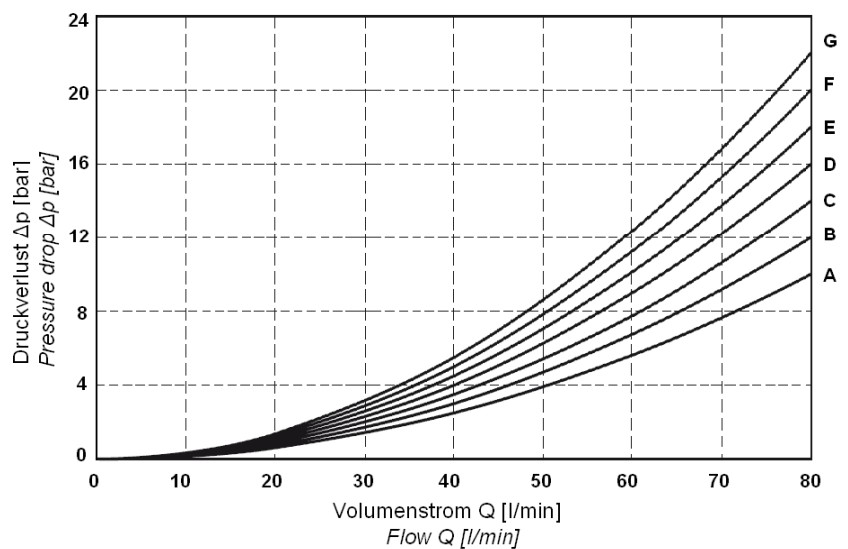
Kolbentypen, Durchflussrichtungen, Q/Δp – Kennlinien / Spool type, flow direction, Q/Δp - diagram

HK 41 C1

Durchflussrichtung Flow direction Kolbentyp Spool type	Durchflussrichtung Flow direction			
	P→A	P→B	A→T	B→T
01	A	A	D	D
03	B	B	B	B
07	E	F	G	E
08	B	B	C	C
51	D	B	C	D

Q/Δp Diagramm

Q/Δp Diagram



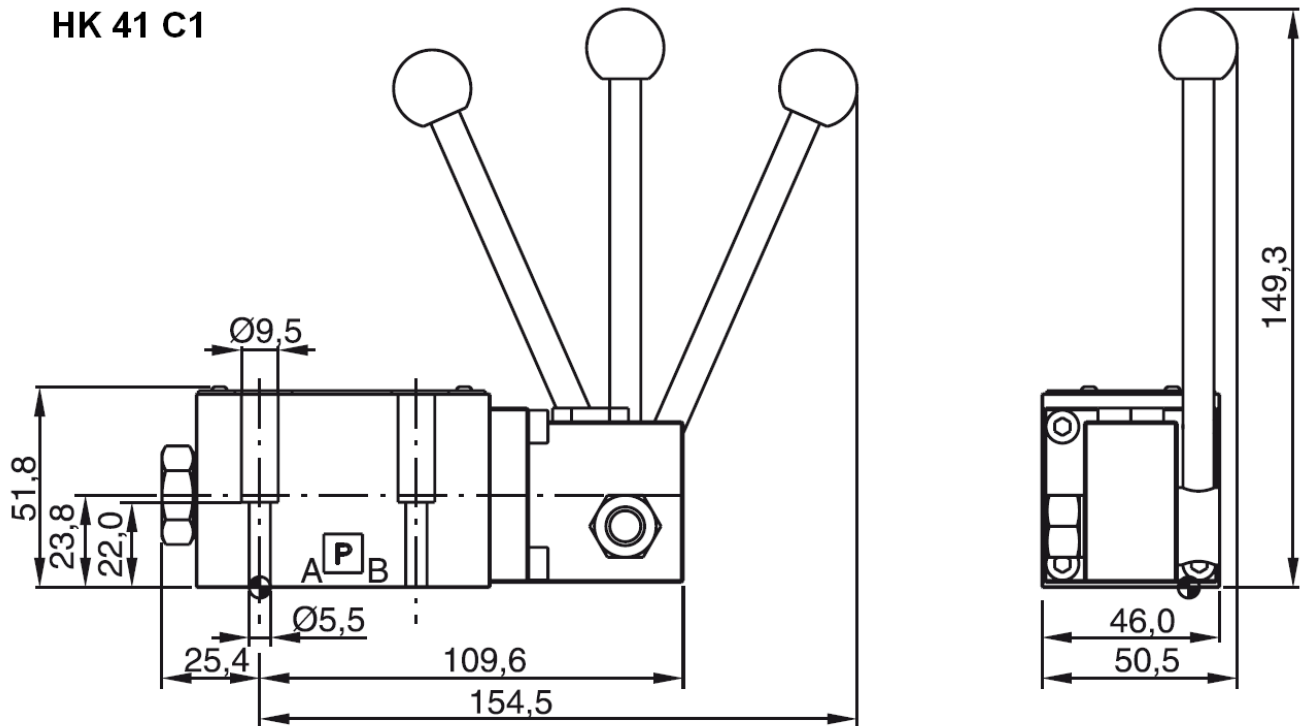
HK 41 C1

Handwegeventil NG6

Manual operated valve Size 6

HANSA FLEX

Abmessungen / Dimensions



Schraubensatz: 4 Inbusschrauben M5x30 12.9

Screw set: 4 socket head screws M5x30 12.9