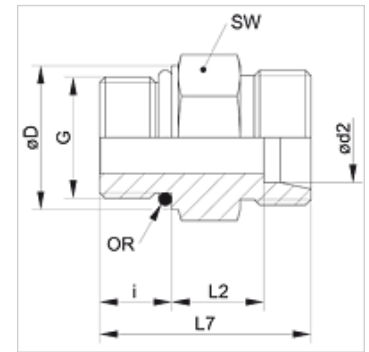


Osobine

| | |
|---------------------------|---|
| Priključak 1 | metrički spoljni cilindrični navoj |
| Oblik zaptivke 1 | oblik F |
| Priključak 2 | metrički spoljni cilindrični navoj |
| Oblik zaptivke 2 | 24° unutrašnji konus |
| Konstrukcija | Uvrtni navojni spoj |
| Konstrukcija | pravo |
| Norma | ISO 8434-1 |
| Obim isporuke | Nastavak (bez preklopne navrtke i reznog prstena) |
| Materijal | čelik |
| Površinska zaštita | galvanska prevlaka |



Napomena

Molimo Vas da napomene za montažu, ugradnju, opterećenje pod pritiskom i dozvoljene radne temperature nađete u tehničkim informacijama o navojnim spojevima za cevi.

Artikal

| Naziv | Seriya | Radni pritisak bar | Ø d2 (mm) | G | Ø D (mm) | i (mm) | L2 (mm) | L7 (mm) | SW (mm) | OR |
|------------------|--------|--------------------|-----------|------------|----------|--------|---------|---------|---------|------------|
| XVMO 04 LL | LL | PN 100 | 4 | M 8 x 1 | 10,8 | 6,5 | 9,5 | 20,0 | 11 | 6,1 x 1,6 |
| XVMO 04 LL 10 | LL | PN 100 | 4 | M 10 x 1 | 12,8 | 6,5 | 9,5 | 20,0 | 13 | 8,0 x 1,5 |
| XVMO 06 LL | LL | PN 100 | 6 | M 10 x 1 | 12,8 | 6,5 | 8,0 | 20,0 | 13 | 8,0 x 1,5 |
| XVMO NW 04 HL | L | PN 250 | 6 | M 10 x 1 | 14,0 | 8,5 | 8,5 | 24,0 | 14 | 8,0 x 1,5 |
| XVMO NW 06 HL | L | PN 250 | 8 | M 12 x 1,5 | 17,0 | 11,0 | 10,0 | 28,0 | 17 | 9,3 x 2,4 |
| XVMO NW 08 HL | L | PN 250 | 10 | M 14 x 1,5 | 19,0 | 11,0 | 11,0 | 29,0 | 19 | 11,3 x 2,4 |
| XVMO NW 10 HL | L | PN 250 | 12 | M 16 x 1,5 | 22,0 | 11,5 | 12,5 | 31,0 | 22 | 13,3 x 2,4 |
| XVMO NW 10 HL 18 | L | PN 315 | 12 | M 18 x 1,5 | 24,0 | 12,0 | 12,5 | 31,5 | 24 | 15,3 x 2,4 |
| XVMO NW 13 HL | L | PN 250 | 15 | M 18 x 1,5 | 24,0 | 12,5 | 13,5 | 33,0 | 24 | 15,3 x 2,4 |
| XVMO NW 13 HL 22 | L | PN 315 | 15 | M 22 x 1,5 | 27,0 | 13,0 | 15,0 | 35,0 | 27 | 19,3 x 2,4 |
| XVMO NW 16 HL | L | PN 160 | 18 | M 22 x 1,5 | 27,0 | 13,0 | 14,5 | 35,0 | 27 | 19,3 x 2,4 |
| XVMO NW 20 HL | L | PN 160 | 22 | M 26 x 1,5 | 31,0 | 16,0 | 17,5 | 41,0 | 41 | 23,3 x 2,4 |
| XVMO NW 20 HL 27 | L | PN 160 | 22 | M 27 x 2 | 32,0 | 16,0 | 16,5 | 40,0 | 32 | 23,6 x 2,9 |
| XVMO NW 25 HL | L | PN 100 | 28 | M 33 x 2 | 41,0 | 16,0 | 17,5 | 41,0 | 41 | 29,5 x 3,0 |
| XVMO NW 32 HL | L | PN 100 | 35 | M 42 x 2 | 50,0 | 16,0 | 17,5 | 44,0 | 50 | 38,0 x 3,0 |
| XVMO NW 40 HL | L | PN 160 | 42 | M 48 x 2 | 55,0 | 17,5 | 19,0 | 47,5 | 55 | 44,6 x 3,0 |
| XVMO NW 03 HS | S | PN 630 | 6 | M 12 x 1,5 | 17,0 | 11,0 | 13,0 | 31,0 | 17 | 9,3 x 2,4 |
| XVMO NW 04 HS | S | PN 630 | 8 | M 14 x 1,5 | 19,0 | 11,0 | 15,0 | 33,0 | 19 | 11,3 x 2,4 |
| XVMO NW 06 HS | S | PN 630 | 10 | M 16 x 1,5 | 22,0 | 12,5 | 15,0 | 35,0 | 22 | 13,3 x 2,4 |
| XVMO NW 08 HS | S | PN 630 | 12 | M 18 x 1,5 | 24,0 | 14,0 | 17,0 | 38,5 | 24 | 15,3 x 2,4 |
| XVMO NW 13 HS | S | PN 400 | 16 | M 22 x 1,5 | 27,0 | 15,0 | 18,5 | 42,0 | 27 | 19,3 x 2,4 |
| XVMO NW 16 HS | S | PN 400 | 20 | M 27 x 2 | 32,0 | 18,5 | 20,5 | 45,0 | 32 | 23,5 x 3,0 |
| XVMO NW 20 HS | S | PN 400 | 25 | M 33 x 2 | 41,0 | 18,5 | 23,0 | 53,5 | 41 | 29,5 x 3,0 |
| XVMO NW 25 HS | S | PN 250 | 30 | M 42 x 2 | 50,0 | 19,0 | 23,5 | 56,0 | 50 | 38,0 x 3,0 |
| XVMO NW 32 HS | S | PN 315 | 38 | M 48 x 2 | 55,0 | 21,5 | 26,0 | 63,5 | 55 | 46,7 x 2,8 |

Seriya: LL = veoma lako L = lako S = teško - PN = nominalni pritisak PB = maks. radni pritisak - Ø d2 = spoljni prečnik cevi

Varijante proizvoda

VMO Uvrtni navojni spoj, čelik