

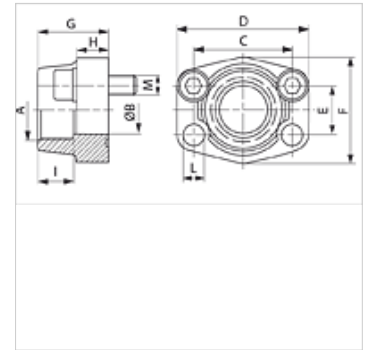
# AFS G U (3000 PSI)

SAE uvrtna navojna prirubnica, BSP

**HANSA FLEX**

## Osobine

|                    |   |
|--------------------|---|
| red pritiska       | 3000 psi                                  |
| Norma              | SAE J 518 C<br>ISO 6162                   |
| Konstrukcija       | pravo                                     |
| Konstrukcija       | SAE uvrtni navojna spojnica               |
| Pričvršćivanje     | Otvor za zavrtanj                         |
| Obim isporuke      | sa UNC kompletom zavrtnejeva i O-prstenom |
| Materijal          | S355J2G3 (ST52.3)                         |
| Površinska zaštita | crno nauljen                              |



## Napomena

Navedeni maksimalni radni pritisak odnosi se na prirubnicu! Stvarni radni pritisak se određuje na osnovu cevi (debljina zida) kao i kvaliteta cevi!

## Artikal

| Naziv             | PB 10.9<br>(bar) | Konstrukciona<br>veličina | A            | Ø B<br>(mm) | C<br>(mm) | D<br>(mm) | E<br>(mm) | F<br>(mm) | G<br>(mm) | H<br>(mm) | I<br>(mm) | L<br>(mm) | M col          |
|-------------------|------------------|---------------------------|--------------|-------------|-----------|-----------|-----------|-----------|-----------|-----------|-----------|-----------|----------------|
| AFS 80 G 3/8 U    | 350              | 1/2"                      | G 3/8" -19   | 13          | 38,1      | 54        | 17,5      | 46        | 36        | 16        | 19        | 9,0       | 5/16" x 1.1/4" |
| AFS 80 G 1/2 U    | 350              | 1/2"                      | G 1/2" -14   | 13          | 38,1      | 54        | 17,5      | 46        | 36        | 16        | 19        | 9,0       | 5/16" x 1.1/4" |
| AFS 100 G 1/2 U   | 350              | 3/4"                      | G 1/2" -14   | 13          | 47,6      | 65        | 22,2      | 50        | 36        | 18        | 19        | 11,0      | 3/8" x 1.1/2"  |
| AFS 100 G 3/4 U   | 350              | 3/4"                      | G 3/4" -14   | 19          | 47,6      | 65        | 22,2      | 50        | 36        | 18        | 19        | 11,0      | 3/8" x 1.1/2"  |
| AFS 102 G 1/2 U   | 315              | 1"                        | G 1/2" -14   | 13          | 52,4      | 70        | 26,2      | 55        | 38        | 18        | 22        | 11,0      | 3/8" x 1.1/2"  |
| AFS 102 G 3/4 U   | 315              | 1"                        | G 3/4" -14   | 19          | 52,4      | 70        | 26,2      | 55        | 35        | 21        | 19        | 11,0      | 3/8" x 1.1/2"  |
| AFS 104 G 3/4 U   | 250              | 1.1/4"                    | G 3/4" -14   | 19          | 58,7      | 79        | 30,2      | 68        | 41        | 21        | 22        | 11,5      | 7/16" x 1.1/2" |
| AFS 104 G 1 U     | 250              | 1.1/4"                    | G 1" -11     | 25          | 58,7      | 81        | 30,2      | 65        | 42        | 25        | 22        | 11,5      | -              |
| AFS 104 G 1 1/4 U | 250              | 1.1/4"                    | G 1.1/4" -11 | 32          | 58,7      | 79        | 30,2      | 68        | 41        | 21        | 22        | 11,5      | 7/16" x 1.1/2" |
| AFS 102 G 1 U     | 315              | 1"                        | G 1" -11     | 25          | 52,4      | 70        | 26,2      | 55        | 38        | 18        | 22        | 11,0      | 3/8" x 1.1/2"  |
| AFS 106 G 3/4 U   | 200              | 1.1/2"                    | G 3/4" -14   | 19          | 69,9      | 93        | 35,7      | 78        | 45        | 25        | 24        | 13,5      | 1/2" x 1.3/4"  |
| AFS 106 G 1 U     | 200              | 1.1/2"                    | G 1" -11     | 25          | 69,9      | 93        | 35,7      | 78        | 45        | 25        | 24        | 13,5      | 1/2" x 1.3/4"  |
| AFS 106 G 1 1/4 U | 200              | 1.1/2"                    | G 1.1/4" -11 | 32          | 69,9      | 95        | 35,7      | 78        | 45        | 27        | 24        | 13,5      | 1/2" x 1.3/4"  |
| AFS 106 G 1 1/2 U | 200              | 1.1/2"                    | G 1.1/2" -11 | 38          | 69,9      | 93        | 35,7      | 78        | 45        | 25        | 24        | 13,5      | 1/2" x 1.3/4"  |
| AFS 108 G 1 U     | 200              | 2"                        | G 1" -11     | 25          | 77,8      | 102       | 42,9      | 90        | 45        | 25        | 26        | 13,5      | 1/2" x 1.3/4"  |
| AFS 108 G 1 1/4 U | 200              | 2"                        | G 1.1/4" -11 | 32          | 77,8      | 102       | 42,9      | 90        | 45        | 25        | 24        | 13,5      | 1/2" x 1.3/4"  |
| AFS 108 G 1 1/2 U | 200              | 2"                        | G 1.1/2" -11 | 38          | 77,8      | 102       | 42,9      | 90        | 45        | 25        | 26        | 13,5      | 1/2" x 1.3/4"  |
| AFS 108 G 2 U     | 200              | 2"                        | G 2" -11     | 51          | 77,8      | 102       | 42,9      | 90        | 45        | 25        | 30        | 13,5      | 1/2" x 1.3/4"  |
| AFS 110 G 1 1/2 U | 160              | 2.1/2"                    | G 1.1/2" -11 | 38          | 88,9      | 114       | 50,8      | 105       | 50        | 25        | 30        | 13,5      | 1/2" x 1.3/4"  |
| AFS 110 G 2 U     | 160              | 2.1/2"                    | G 2" -11     | 51          | 88,9      | 114       | 50,8      | 105       | 50        | 25        | 30        | 13,5      | 1/2" x 1.3/4"  |
| AFS 110 G 2 1/2 U | 160              | 2.1/2"                    | G 2.1/2" -11 | 63          | 88,9      | 114       | 50,8      | 105       | 50        | 25        | 30        | 13,5      | 1/2" x 1.3/4"  |
| AFS 112 G 2 1/2 U | 138              | 3"                        | G 2.1/2" -11 | 63          | 106,4     | 134       | 61,9      | 124       | 50        | 27        | 30        | 17,5      | 5/8" x 2"      |
| AFS 112 G 3 U     | 138              | 3"                        | G 3" -11     | 73          | 106,4     | 134       | 61,9      | 124       | 50        | 27        | 34        | 17,5      | 5/8" x 2"      |
| AFS 114 G 3 U     | 35               | 3.1/2"                    | G 3" -11     | 73          | 120,7     | 152       | 69,9      | 136       | 48        | 27        | 34        | 17,5      | 5/8" x 2"      |
| AFS 114 G 3 1/2 U | 35               | 3.1/2"                    | G 3.1/2" -11 | 89          | 120,7     | 152       | 69,9      | 136       | 48        | 27        | 34        | 17,5      | 5/8" x 2"      |
| AFS 116 G 3 1/2 U | 35               | 4"                        | G 3.1/2" -11 | 89          | 130,2     | 162       | 77,8      | 146       | 48        | 27        | 34        | 17,5      | 5/8" x 2"      |
| AFS 116 G 4 U     | 35               | 4"                        | G 4" -11     | 99          | 130,2     | 162       | 77,8      | 146       | 48        | 27        | 34        | 17,5      | 5/8" x 2"      |

PN = nominalni pritisak PB = maks. radni pritisak

## Varijante proizvoda

|                    |   |
|--------------------|---|
| AFS G (3000 PSI)   | SAE uvrtna navojna prirubnica, BSP, samo prirubnica                                 |
| AFS G M (3000 PSI) | SAE uvrtna navojna prirubnica, BSP, sa metričkim kompletom zavrtnejeva i O-prstenom |