

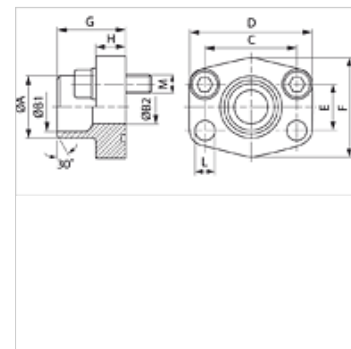
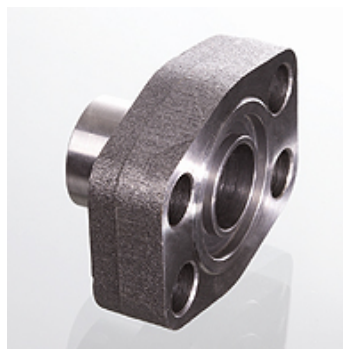
AFS SRE (3000 PSI)

SAE venac za navarivanje

HANSA FLEX

Osobine

red pritiska	3000 psi
Norma	SAE J 518 C ISO 6162
Konstrukcija	pravo
Konstrukcija	SAE venac za navarivanje
Pričvršćivanje	Otvor za zavrtanj
Obim isporuke	samo priрубnica
Materijal	S355J2G3 (ST52.3)
Površinska zaštita	crno nauljen



Napomena

Navedeni maksimalni radni pritisak odnosi se na priрубnicu! Stvarni radni pritisak se određuje na osnovu cevi (debljina zida) kao i kvaliteta cevi! Preporučeni zavrtnji nalaze se u kolonama M (metr) ili M (col).

Artikal

Naziv	PB 10.9 (bar)	Konstrukciona veličina	Cev	A (mm)	B1 (mm)	B2 (mm)	G (mm)	C (mm)	E (mm)	H (mm)	L (mm)	M metr.	M col
AFS 80 SRE 20	350	1/2"	20 x 3	20	14,0	14	35,0	38,1	17,5	16,0	9,0	M 8 x 30	5/16" x 1.1/4"
AFS 80 SRE 22	350	1/2"	22 x 3	22	16,0	13	35,0	38,1	17,5	16,0	9,0	M 8 x 30	5/16" x 1.1/4"
AFS 100 SRE 25	350	3/4"	25 x 3	25	19,0	19	36,0	47,6	22,2	18,0	11,0	M 10 x 35	3/8" x 1.1/2"
AFS 100 SRE 28	350	3/4"	28 x 3	28	21,5	19	36,0	47,6	22,2	18,0	11,0	M 10 x 35	3/8" x 1.1/2"
AFS 102 SRE 30	315	1"	30 x 4	30	22,0	22	38,0	52,4	26,2	18,0	11,0	M 10 x 35	3/8" x 1.1/2"
AFS 102 SRE 35	315	1"	35 x 4	35	27,0	25	38,0	52,4	26,2	18,0	11,0	M 10 x 35	3/8" x 1.1/2"
AFS 104 SRE 38	250	1.1/4"	38 x 4	38	30,0	30	41,0	58,7	30,2	21,0	11,5	M 10 x 40	7/16" x 1.1/2"
AFS 104 SRE 42	250	1.1/4"	42 x 3	43	36,0	31	41,0	58,7	30,2	21,0	11,5	M 10 x 40	7/16" x 1.1/2"
AFS 106 SRE 38	200	1.1/2"	38 x 4	38	30,0	30	44,0	69,9	35,7	25,0	13,5	M 12 x 45	1/2" x 1.3/4"
AFS 106 SRE 42	200	1.1/2"	42 x 3	42	36,0	36	44,0	69,9	35,7	25,0	13,5	M 12 x 45	1/2" x 1.3/4"
AFS 106 SRE 48.3	200	1.1/2"	48,3 x 4,5	49	38,0	38	44,0	69,9	35,7	25,0	13,5	M 12 x 45	1/2" x 1.3/4"
AFS 108 SRE 60	200	2"	60,3 x 5,6	61	49,0	49	45,0	77,8	42,9	25,0	13,5	M 12 x 45	1/2" x 1.3/4"
AFS 110 SRE 76	160	2.1/2"	76,1 x 7,1	77	62,0	62	50,0	88,9	50,8	25,0	13,5	M 12 x 45	1/2" x 1.3/4"
AFS 112 SRE 76	160	3"	76,1 x 7,1	77	62,0	62	51,0	106,4	61,9	26,0	17,5	M 16 x 50	5/8" x 2"

PN = nominalni pritisak PB = maks. radni pritisak

Varijante proizvoda

AFS SRE M (3000 / 6000 PSI)	SAE venac za navarivanje, sa metričkim kompletom zavrtnjeva i O-prstenom
AFS SRE U (3000 / 6000 PSI)	SAE venac za navarivanje, sa UNC kompletom zavrtnjeva i O-prstenom