

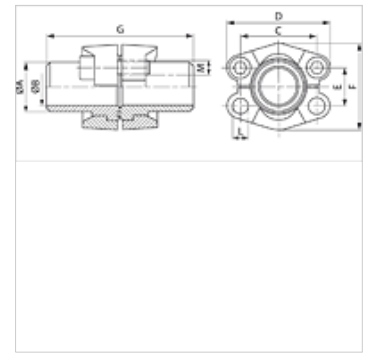
# DSFS (3000 PSI)

SAE-venac za navarivanje, spojnica prirubnice

**HANSA FLEX**

## Osobine

|                    |   |
|--------------------|---|
| red pritiska       | 3000 psi  |
| Norma              | SAE J 518 C<br>ISO 6162                                     |
| Konstrukcija       | pravo   |
| Konstrukcija       | SAE venac za navarivanje, spojnica prirubnice               |
| Pričvršćivanje     | sa metričkim kompletom zavrtnjeva                           |
| Obim isporuke      | sa 2 polovice prirubnice, kompletom zavrtnjeva i O-prstenom |
| Materijal          | S355J2G3 (ST52.3)   |
| Površinska zaštita | galvanska prevlaka  |



## Napomena

Navedeni maksimalni radni pritisak odnosi se na prirubnicu! Stvarni radni pritisak se određuje na osnovu cevi (debljina zida) kao i kvaliteta cevi!

## Artikal

| Naziv           | PB 10.9<br>(bar) | Konstrukciona<br>veličina | Cev         | A<br>(mm) | Ø B<br>(mm) | C<br>(mm) | D<br>(mm) | E<br>(mm) | F<br>(mm) | G<br>(mm) | L<br>(mm) | M metr.   | M col          |
|-----------------|------------------|---------------------------|-------------|-----------|-------------|-----------|-----------|-----------|-----------|-----------|-----------|-----------|----------------|
| DSFS 3001-16    | 350              | 1/2"                      | 16 x 2      | 16,0      | 12,0        | 38,1      | 54        | 17,5      | 45,6      | 82        | 8,5       | M 8 x 30  | 5/16" x 1.1/4" |
| DSFS 3001-21.3  | 350              | 1/2"                      | 21,3 x 4,7  | 22,0      | 15,5        | 38,1      | 54        | 17,5      | 45,6      | 82        | 8,5       | M 8 x 30  | 5/16" x 1.1/4" |
| DSFS 3002-25    | 350              | 3/4"                      | 25 x 3      | 27,0      | 18,9        | 47,6      | 65        | 22,2      | 51,8      | 100       | 10,5      | M 10 x 30 | 3/8" x 1.1/4"  |
| DSFS 3002-26.9  | 350              | 3/4"                      | 26,9 x 3,9  | 27,0      | 18,9        | 47,6      | 65        | 22,2      | 51,8      | 100       | 10,5      | M 10 x 30 | 3/8" x 1.1/4"  |
| DSFS 3003-28    | 315              | 1"                        | 28 x 3      | 28,0      | 22,0        | 52,4      | 70        | 26,2      | 58,4      | 100       | 10,5      | M 10 x 35 | 3/8" x 1.1/4"  |
| DSFS 3003-30    | 315              | 1"                        | 30 x 4      | 30,0      | 22,0        | 52,4      | 70        | 26,2      | 58,4      | 100       | 10,5      | M 10 x 35 | 3/8" x 1.1/4"  |
| DSFS 3003-33.7  | 315              | 1"                        | 33,7 x 4,5  | 34,0      | 24,7        | 52,4      | 70        | 26,2      | 58,4      | 100       | 10,5      | M 10 x 35 | 3/8" x 1.1/4"  |
| DSFS 3003-38    | 315              | 1"                        | 38 x 5      | 38,0      | 28,0        | 52,4      | 70        | 26,2      | 58,4      | 100       | 10,5      | M 10 x 35 | 3/8" x 1.1/4"  |
| DSFS 3004-38    | 250              | 1.1/4"                    | 38 x 5      | 38,0      | 28,0        | 58,7      | 79        | 30,2      | 72,6      | 110       | 11,0      | *1        | 7/16" x 1.1/2" |
| DSFS 3004-42.4  | 250              | 1.1/4"                    | 42,4 x 6,3  | 43,0      | 29,7        | 58,7      | 79        | 30,2      | 72,6      | 110       | 11,0      | *1        | 7/16" x 1.1/2" |
| DSFS 3005-38    | 200              | 1.1/2"                    | 38 x 4      | 38,0      | 30,0        | 69,9      | 94        | 35,7      | 82,2      | 114       | 13,5      | M 12 x 35 | 1/2" x 1.1/2"  |
| DSFS 3005-42    | 200              | 1.1/2"                    | 42 x 5      | 42,0      | 32,0        | 69,9      | 94        | 35,7      | 82,2      | 114       | 13,5      | M 12 x 35 | 1/2" x 1.1/2"  |
| DSFS 3005-45    | 200              | 1.1/2"                    | 45 x 5      | 45,0      | 35,0        | 69,9      | 94        | 35,7      | 82,2      | 114       | 13,5      | M 12 x 35 | 1/2" x 1.1/2"  |
| DSFS 3005-48.3  | 200              | 1.1/2"                    | 48,3 x 7,1  | 49,0      | 34,0        | 69,9      | 94        | 35,7      | 82,2      | 114       | 13,5      | M 12 x 35 | 1/2" x 1.1/2"  |
| DSFS 3006-55    | 200              | 2"                        | 55 x 5      | 55,0      | 45,0        | 77,8      | 102       | 42,9      | 96,4      | 114       | 13,5      | M 12 x 35 | 1/2" x 1.1/2"  |
| DSFS 3006-60.3  | 200              | 2"                        | 60,3 x 8    | 60,3      | 44,0        | 77,8      | 102       | 42,9      | 96,4      | 114       | 13,5      | M 12 x 35 | 1/2" x 1.1/2"  |
| DSFS 3007-65    | 160              | 2"                        | 65 x 6      | 65,0      | 53,0        | 88,9      | 114       | 50,8      | 108,2     | 116       | 13,5      | M 12 x 40 | 1/2" x 1.3/4"  |
| DSFS 3007-70    | 160              | 2.1/2"                    | 70 x 7,5    | 70,0      | 55,0        | 88,9      | 114       | 50,8      | 108,2     | 116       | 13,5      | M 12 x 40 | 1/2" x 1.3/4"  |
| DSFS 3007-76.1  | 160              | 2.1/2"                    | 76,1 x 7,1  | 74,0      | 62,0        | 88,9      | 114       | 50,8      | 108,2     | 116       | 13,5      | M 12 x 40 | 1/2" x 1.3/4"  |
| DSFS 3008-80    | 138              | 2.1/2"                    | 80 x 6      | 80,0      | 68,0        | 106,4     | 135       | 61,9      | 130,6     | 120       | 16,7      | M 16 x 45 | 5/8" x 2"      |
| DSFS 3008-88.9  | 138              | 3"                        | 88,9 x 8    | 90,0      | 73,0        | 106,4     | 135       | 61,9      | 130,6     | 120       | 16,7      | M 16 x 45 | 5/8" x 2"      |
| DSFS 3009-100   | 35               | 3.1/2"                    | 100 x 6     | 100,0     | 88,0        | 120,7     | 152       | 69,9      | 139,0     | 120       | 17,0      | M 16 x 45 | 5/8" x 2"      |
| DSFS 3009-88.9  | 35               | 3"                        | 88,9 x 8    | 90,0      | 73,0        | 120,7     | 152       | 69,9      | 139,0     | 120       | 17,0      | M 16 x 45 | 5/8" x 2"      |
| DSFS 3010-110   | 35               | 3.1/2"                    | 110 x 6     | 110,0     | 98,0        | 130,2     | 162       | 77,8      | 152,0     | 120       | 17,0      | M 16 x 50 | 5/8" x 2"      |
| DSFS 3010-114.3 | 35               | 4"                        | 114,3 x 8,8 | 115,0     | 96,7        | 130,2     | 162       | 77,8      | 152,0     | 120       | 17,0      | M 16 x 50 | 5/8" x 2"      |
| DSFS 3011-133   | 35               | 5"                        | 133 x 6,5   | 133,0     | 120,0       | 152,4     | 184       | 92,1      | 180,0     | 120       | 17,0      | M 16 x 50 | 5/8" x 2"      |
| DSFS 3011-139.7 | 35               | 5"                        | 139,7 x 10  | 140,0     | 120,0       | 152,4     | 184       | 92,1      | 180,0     | 120       | 17,0      | M 16 x 50 | 5/8" x 2"      |

PN = nominalni pritisak PB = maks. radni pritisak

\*1) = po izboru M 10 x 30 ili M 12 x 35