

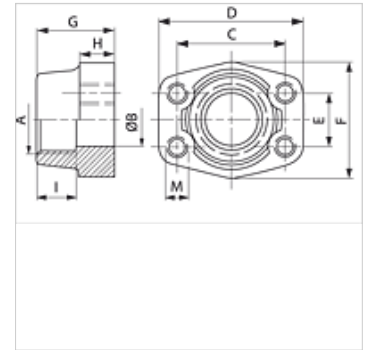
GFS G U (3000 / 6000 PSI)

SAE uvrtna navojna kontraprirubnica, BSP

HANSA FLEX

Osobine

| | |
|--------------------|--------------------------------------|
| Norma | SAE J 518 C ISO 6162 |
| Konstrukcija | pravo |
| Konstrukcija | SAE uvrtna navojna kontra prirubnica |
| Pričvršćivanje | unutrašnji navoj za UNC zavrtnje |
| Obim isporuke | samo prirubnica |
| Materijal | S355J2G3 (ST52.3) |
| Površinska zaštita | crno nauljen |



Napomena

Navedeni maksimalni radni pritisak odnosi se na prirubnicu! Stvarni radni pritisak se određuje na osnovu cevi (debljina zida) kao i kvaliteta cevi!

Artikal

| Naziv | red pritiska | PB 10.9 (bar) | Konstrukciona veličina | A | Ø B (mm) | C (mm) | D (mm) | E (mm) | F (mm) | G (mm) | H (mm) | I (mm) | M col |
|-------------------|--------------|------------------|---------------------------|--------------|-------------|-----------|-----------|-----------|-----------|-----------|-----------|-----------|-----------|
| GFS 80 G U | 3000 PSI | 350 | 1/2" | G 1/2" -14 | 13 | 38,1 | 54 | 17,5 | 46 | 36 | 16 | 19 | UNC 5/16" |
| GFS 80 G 3/8 U | 3000 PSI | 350 | 1/2" | G 3/8" -19 | 13 | 38,1 | 54 | 17,5 | 46 | 36 | 16 | 19 | UNC 5/16" |
| GFS 100 G U | 3000 PSI | 350 | 3/4" | G 3/4" -14 | 19 | 47,6 | 65 | 22,2 | 50 | 36 | 18 | 19 | UNC 3/8" |
| GFS 100 G 1/2 U | 3000 PSI | 350 | 3/4" | G 1/2" -14 | 13 | 47,6 | 65 | 22,2 | 50 | 36 | 18 | 19 | UNC 3/8" |
| GFS 102 G U | 3000 PSI | 315 | 1" | G 1" -11 | 25 | 52,4 | 70 | 26,2 | 55 | 38 | 18 | 22 | UNC 3/8" |
| GFS 102 G 3/4 U | 3000 PSI | 315 | 1" | G 3/4" -14 | 19 | 52,4 | 70 | 26,2 | 55 | 35 | 21 | 19 | UNC 3/8" |
| GFS 104 G U | 3000 PSI | 250 | 1.1/4" | G 1.1/4" -11 | 32 | 58,7 | 79 | 30,2 | 68 | 41 | 21 | 22 | UNC 7/16" |
| GFS 104 G 1 U | 3000 PSI | 250 | 1.1/4" | G 1" -11 | 25 | 58,7 | 81 | 30,2 | 65 | 42 | 25 | 22 | UNC 7/16" |
| GFS 106 G U | 3000 PSI | 200 | 1.1/2" | G 1.1/2" -11 | 38 | 69,9 | 93 | 35,7 | 78 | 45 | 25 | 24 | UNC 1/2" |
| GFS 106 G 1 1/4 U | 3000 PSI | 200 | 1.1/2" | G 1.1/4" -11 | 32 | 69,9 | 95 | 35,7 | 78 | 45 | 27 | 24 | UNC 1/2" |
| GFS 108 G U | 3000 PSI | 200 | 2" | G 2" -11 | 51 | 77,8 | 102 | 42,9 | 90 | 45 | 25 | 30 | UNC 1/2" |
| GFS 108 G 1 1/2 U | 3000 PSI | 200 | 2" | G 1.1/2" -11 | 38 | 77,8 | 102 | 42,9 | 90 | 45 | 25 | 26 | UNC 1/2" |
| GFS 110 G U | 3000 PSI | 160 | 2.1/2" | G 2.1/2" -11 | 63 | 88,9 | 114 | 50,8 | 105 | 50 | 25 | 30 | UNC 1/2" |
| GFS 110 G 2 U | 3000 PSI | 160 | 2.1/2" | G 2" -11 | 51 | 88,9 | 114 | 50,8 | 105 | 50 | 25 | 30 | UNC 1/2" |
| GFS 112 G U | 3000 PSI | 138 | 3" | G 3" -11 | 73 | 106,4 | 134 | 61,9 | 124 | 50 | 27 | 34 | UNC 5/8" |
| GFS 112 G 2 1/2 U | 3000 PSI | 138 | 3" | G 2.1/2" -11 | 63 | 106,4 | 134 | 61,9 | 124 | 50 | 27 | 30 | UNC 5/8" |
| GFS 114 G U | 3000 PSI | 35 | 3.1/2" | G 3.1/2" -11 | 89 | 120,7 | 152 | 69,9 | 136 | 48 | 27 | 34 | UNC 5/8" |
| GFS 114 G 3 U | 3000 PSI | 35 | 3.1/2" | G 3" -11 | 73 | 120,7 | 152 | 69,9 | 136 | 48 | 27 | 34 | UNC 5/8" |
| GFS 116 G U | 3000 PSI | 35 | 4" | G 4" -11 | 99 | 130,2 | 162 | 77,8 | 146 | 48 | 27 | 34 | UNC 5/8" |
| GFS 116 G 3 1/2 U | 3000 PSI | 35 | 4" | G 3.1/2" -11 | 89 | 130,2 | 162 | 77,8 | 146 | 48 | 27 | 34 | UNC 5/8" |
| GFS 401 G U | 6000 PSI | 400 | 1/2" | G 1/2" -14 | 13 | 40,5 | 54 | 18,2 | 46 | 36 | 16 | 19 | UNC 5/16" |
| GFS 401 G 3/8 U | 6000 PSI | 400 | 1/2" | G 3/8" -19 | 13 | 40,5 | 54 | 18,2 | 46 | 36 | 16 | 19 | UNC 5/16" |
| GFS 402 G U | 6000 PSI | 400 | 3/4" | G 3/4" -14 | 19 | 50,8 | 71 | 23,8 | 55 | 35 | 21 | 22 | UNC 3/8" |
| GFS 402 G 1/2 U | 6000 PSI | 400 | 3/4" | G 1/2" -14 | 13 | 50,8 | 71 | 23,8 | 55 | 35 | 21 | 22 | UNC 3/8" |
| GFS 403 G U | 6000 PSI | 400 | 1" | G 1" -11 | 25 | 57,2 | 81 | 27,8 | 65 | 42 | 25 | 24 | UNC 7/16" |
| GFS 403 G 3/4 U | 6000 PSI | 400 | 1" | G 3/4" -14 | 19 | 57,2 | 81 | 27,8 | 65 | 42 | 25 | 24 | UNC 7/16" |
| GFS 404 G U | 6000 PSI | 400 | 1.1/4" | G 1.1/4" -11 | 32 | 66,7 | 95 | 31,8 | 78 | 45 | 27 | 25 | UNC 1/2" |
| GFS 404 G 1 U | 6000 PSI | 400 | 1.1/4" | G 1" -11 | 25 | 66,7 | 95 | 31,8 | 78 | 45 | 27 | 25 | UNC 1/2" |
| GFS 405 G U | 6000 PSI | 400 | 1.1/2" | G 1.1/2" -11 | 38 | 79,4 | 112 | 36,5 | 94 | 50 | 30 | 28 | UNC 5/8" |
| GFS 405 G 1 1/4 U | 6000 PSI | 400 | 1.1/2" | G 1.1/4" -11 | 32 | 79,4 | 112 | 36,5 | 94 | 50 | 30 | 28 | UNC 5/8" |
| GFS 406 G U | 6000 PSI | 400 | 2" | G 2" -11 | 51 | 96,8 | 134 | 44,5 | 114 | 65 | 37 | 30 | UNC 3/4" |
| GFS 406 G 1 1/2 U | 6000 PSI | 400 | 2" | G 1.1/2" -11 | 38 | 96,8 | 134 | 44,5 | 114 | 65 | 37 | 30 | UNC 3/4" |

PN = nominalni pritisak PB = maks. radni pritisak

Varijante proizvoda

GFS G M (3000 / 6000 PSI) SAE uvrtna navojna kontraprirubnica, BSP, samo prirubnica