

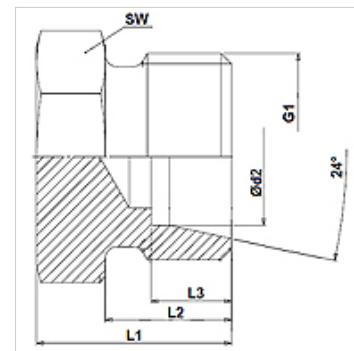
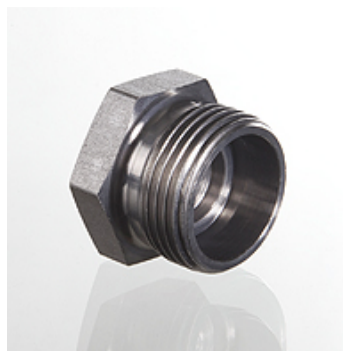
XVHLL / XVHL / XVHS

Nastavak za zatvaranje

HANSA FLEX

Osobine

| | |
|--------------------|---|
| Priključak 1 | metrički spoljni cilindrični navoj |
| Oblik zaptivke 1 | 24° unutrašnji konus |
| Konstrukcija | Nastavak za zatvaranje |
| Konstrukcija | pravo |
| Norma | DIN 2353 ISO 8434-1 |
| Obim isporuke | Nastavak (bez preklopne navrtke i reznog prstena) |
| Materijal | čelik |
| Površinska zaštita | galvanska prevlaka |



Napomena

Molimo Vas da napomene za montažu, ugradnju, opterećenje pod pritiskom i dozvoljene radne temperature nađete u tehničkim informacijama o navojnim spojevima za cevi.

Artikal

| Naziv | Seriya | Radni pritisak bar | Ø d2 (mm) | G1 | L1 (mm) | L2 (mm) | L3 (mm) | SW (mm) |
|------------|--------|--------------------|-----------|------------|---------|---------|---------|---------|
| XVHLL 04 | LL | PN 100 | 4 | M 8 x 1 | 12 | 8,0 | 4,0 | 9 |
| XVHLL 05 | LL | PN 100 | 5 | M 10 x 1 | 12 | 8,0 | 5,5 | 11 |
| XVHLL 06 | LL | PN 100 | 6 | M 10 x 1 | 12 | 8,0 | 5,5 | 11 |
| XVHLL 08 | LL | PN 100 | 8 | M 12 x 1 | 14 | 9,0 | 5,5 | 12 |
| XVHL NW 04 | L | PN 315 | 6 | M 12 x 1,5 | 14 | 10,0 | 7,0 | 12 |
| XVHL NW 06 | L | PN 315 | 8 | M 14 x 1,5 | 15 | 10,0 | 7,0 | 14 |
| XVHL NW 08 | L | PN 315 | 10 | M 16 x 1,5 | 16 | 11,0 | 7,0 | 17 |
| XVHL NW 10 | L | PN 315 | 12 | M 18 x 1,5 | 17 | 11,0 | 7,0 | 19 |
| XVHL NW 13 | L | PN 315 | 15 | M 22 x 1,5 | 18 | 12,0 | 7,0 | 24 |
| XVHL NW 16 | L | PN 315 | 18 | M 26 x 1,5 | 19 | 12,0 | 7,5 | 27 |
| XVHL NW 20 | L | PN 160 | 22 | M 30 x 2 | 21 | 14,0 | 7,5 | 32 |
| XVHL NW 25 | L | PN 160 | 28 | M 36 x 2 | 22 | 14,0 | 7,5 | 41 |
| XVHL NW 32 | L | PN 160 | 35 | M 45 x 2 | 25 | 16,0 | 10,5 | 46 |
| XVHL NW 40 | L | PN 160 | 42 | M 52 x 2 | 27 | 16,0 | 11,0 | 55 |
| XVHS NW 03 | S | PN 630 | 6 | M 14 x 1,5 | 18 | 12,0 | 7,0 | 14 |
| XVHS NW 04 | S | PN 630 | 8 | M 16 x 1,5 | 20 | 12,0 | 7,0 | 17 |
| XVHS NW 06 | S | PN 630 | 10 | M 18 x 1,5 | 20 | 12,0 | 7,5 | 19 |
| XVHS NW 08 | S | PN 630 | 12 | M 20 x 1,5 | 22 | 12,0 | 7,5 | 22 |
| XVHS NW 10 | S | PN 630 | 14 | M 22 x 1,5 | 24 | 14,0 | 8,0 | 24 |
| XVHS NW 13 | S | PN 400 | 16 | M 24 x 1,5 | 24 | 14,0 | 8,5 | 27 |
| XVHS NW 16 | S | PN 400 | 20 | M 30 x 2 | 28 | 16,0 | 10,5 | 32 |
| XVHS NW 20 | S | PN 400 | 25 | M 36 x 2 | 32 | 18,0 | 12,0 | 41 |
| XVHS NW 25 | S | PN 400 | 30 | M 42 x 2 | 36 | 20,0 | 13,5 | 46 |
| XVHS NW 32 | S | PN 315 | 38 | M 52 x 2 | 39 | 22,0 | 16,0 | 55 |

Seriya: LL = veoma lako L = lako S = teško - PN = nominalni pritisak PB = maks. radni pritisak - Ø d2 = spoljni prečnik cevi

Varijante proizvoda

| | |
|-------------------|---|
| XVHL VA / XVHS VA | Nastavak za zatvaranje, plemeniti čelik |
| VHLL / VHL / VHS | Nastavak za zatvaranje, čelik |