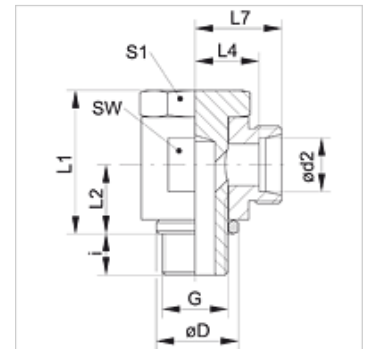


Osobine

Priključak 1	metrički spoljni cilindrični navoj
Oblik zaptivke 1	Prsten sa zaptivnim rubom
Priključak 2	metrički spoljni cilindrični navoj
Oblik zaptivke 2	24° unutrašnji konus
Konstrukcija	Zglobni navojni spoj, bez prigušivanja
Konstrukcija	ugao 90°
Norma	DIN 2353 ISO 8434-1
Obim isporuke	Nastavak (bez preklopne navrtke i reznog prstena)
Materijal	čelik
Površinska zaštita	galvanska prevlaka



Napomena

Molimo Vas da napomene za montažu, ugradnju, opterećenje pod pritiskom i dozvoljene radne temperature nađete u tehničkim informacijama o navojnim spojevima za cevi.

Artikal

Naziv	Seriya	Radni pritisak bar	Ø d2 (mm)	G	Ø D (mm)	i (mm)	L1 (mm)	L2 (mm)	L4 (mm)	L7 (mm)	SW (mm)	S1
XSDM NW 04 HL	L	PN 250	6	M 10 x 1	14	8	24,0	10,5	12,0	19,0	17	17
XSDM NW 06 HL	L	PN 250	8	M 12 x 1,5	17	12	30,0	14,0	14,5	21,5	22	19
XSDM NW 08 HL	L	PN 250	10	M 14 x 1,5	19	12	30,0	14,0	15,5	22,5	22	19
XSDM NW 10 HL	L	PN 250	12	M 16 x 1,5	21	12	36,0	16,5	18,0	25,0	27	24
XSDM NW 10 HL 18	L	PN 250	12	M 18 x 1,5	23	12	38,0	17,0	13,5	25,0	30	27
XSDM NW 13 HL	L	PN 250	15	M 18 x 1,5	23	12	39,5	18,5	20,5	27,5	30	27
XSDM NW 16 HL	L	PN 250	18	M 22 x 1,5	27	14	45,0	21,5	21,0	28,5	32	30
XSDM NW 20 HL	L	PN 160	22	M 26 x 1,5	31	16	53,0	24,0	27,5	35,0	41	36
XSDM NW 25 HL	L	PN 160	28	M 33 x 2	39	18	66,0	30,5	32,0	39,5	50	46
XSDM NW 32 HL	L	PN 160	35	M 42 x 2	49	20	76,0	35,5	36,0	46,5	60	55
XSDM NW 40 HL	L	PN 160	42	M 48 x 2	55	22	87,0	40,5	40,5	51,5	70	60
XSDM NW 03 HS	S	PN 315	6	M 12 x 1,5	17	12	30,0	14,0	16,5	23,5	22	19
XSDM NW 04 HS	S	PN 315	8	M 14 x 1,5	19	12	30,0	14,0	16,5	23,5	22	19
XSDM NW 06 HS	S	PN 315	10	M 16 x 1,5	21	12	36,0	16,5	18,5	26,0	27	24
XSDM NW 08 HS	S	PN 315	12	M 18 x 1,5	23	12	39,5	18,5	20,0	27,5	30	27
XSDM NW 10 HS	S	PN 315	14	M 20 x 1,5	25	14	43,5	20,0	22,5	30,5	32	30
XSDM NW 13 HS	S	PN 315	16	M 22 x 1,5	27	14	45,0	21,5	22,0	30,5	32	30
XSDM NW 16 HS	S	PN 160	20	M 27 x 2	32	16	53,0	24,0	26,5	37,0	41	36
XSDM NW 20 HS	S	PN 160	25	M 33 x 2	39	18	66,0	30,5	31,5	43,5	50	46
XSDM NW 25 HS	S	PN 160	30	M 42 x 2	49	20	76,0	35,5	37,0	50,5	60	55
XSDM NW 32 HS	S	PN 160	38	M 48 x 2	55	22	87,0	40,5	41,5	57,5	70	60

Seriya: LL = veoma lako L = lako S = teško - PN = nominalni pritisak PB = maks. radni pritisak - Ø = spoljni prečnik cevi

Varijante proizvoda

SDM Zglobni navojni spoj, bez prigušivanja, W90°, čelik