

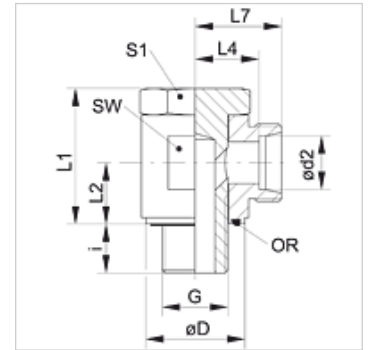
# XSDOR VA

Zglobni navojni spoj, bez prigušivanja, W90°

**HANSA FLEX**

## Osobine

Priključak 1	BSP spoljni cilindrični navoj
Oblik zaptivke 1	Oblik E
Priključak 2	metrički spoljni cilindrični navoj
Oblik zaptivke 2	24° unutrašnji konus
Konstrukcija	Zglobni navojni spoj, bez prigušivanja
Konstrukcija	ugao 90°
Norma	DIN 2353 ISO 8434-1
Obim isporuke	Nastavak (bez preklapne navrtke i reznog prstena)
Materijal	plemeniti čelik



## Napomena

Molimo Vas da napomene za montažu, ugradnju, opterećenje pod pritiskom i dozvoljene radne temperature nađete u tehničkim informacijama o navojnim spojevima za cevi.

## Napomene u vezi porudžbine

NBR зaптивке

ФГМ (витон) на захтев

## Artikal

Naziv	Seriya	Radni pritisak bar	Ø d2 (mm)	G	Ø D (mm)	i (mm)	L1 (mm)	L2 (mm)	L4 (mm)	L7 (mm)	SW (mm)	S1	OR
XSDOR 04 LL VA	LL	PN 100	4	G 1/8" -28	14,5	8,0	23,5	10,5	14,0	18,0	17	17	7,65 x 1,78
XSDOR 06 LL VA	LL	PN 100	6	G 1/8" -28	14,5	8,0	23,5	10,5	13,5	19,0	17	17	7,65 x 1,78
XSDOR 08 LL VA	LL	PN 100	8	G 1/8" -28	14,5	8,0	23,5	10,5	13,5	19,0	17	17	7,65 x 1,78
XSDOR NW 04 HL VA	L	PN 315	6	G 1/8" -28	14,5	8,0	23,5	10,5	12,0	19,0	17	17	7,65 x 1,78
XSDOR NW 06 HL VA	L	PN 315	8	G 1/4" -19	19,0	13,0	29,0	14,0	14,5	21,5	22	19	11,10 x 1,78
XSDOR NW 08 HL VA	L	PN 315	10	G 1/4" -19	19,0	12,5	29,0	14,0	15,5	22,5	22	19	11,10 x 1,78
XSDOR NW 10 HL 1/4 VA	L	PN 315	12	G 1/4" -19	19,0	12,0	34,0	16,5	18,0	25,0	27	19	11,10 x 1,78
XSDOR NW 10 HL VA	L	PN 315	12	G 3/8" -19	22,5	12,0	35,0	16,5	18,0	25,0	27	24	14,00 x 1,78
XSDOR NW 13 HL VA	L	PN 315	15	G 1/2" -14	27,0	12,0	46,0	21,5	21,5	28,5	32	27	18,77 x 1,78
XSDOR NW 16 HL VA	L	PN 315	18	G 1/2" -14	27,0	14,0	46,0	21,5	21,0	28,5	32	27	18,77 x 1,78
XSDOR NW 20 HL VA	L	PN 160	22	G 3/4" -14	32,5	16,0	52,0	24,0	27,5	35,0	41	36	23,81 x 2,62
XSDOR NW 25 HL VA	L	PN 160	28	G 1" -11	40,0	18,0	64,0	30,5	32,0	39,5	50	46	29,82 x 2,62
XSDOR NW 32 HL VA	L	PN 160	35	G 1.1/4" -11	50,0	20,0	75,0	35,5	36,0	46,5	60	50	37,77 x 2,62
XSDOR NW 40 HL VA	L	PN 160	42	G 1.1/2" -11	55,5	22,0	74,0	40,5	40,5	51,5	70	60	41,28 x 3,53
XSDOR NW 03 HS VA	S	PN 400	6	G 1/4" -19	19,0	13,0	29,0	14,0	16,5	23,5	22	19	11,10 x 1,78
XSDOR NW 04 HS VA	S	PN 400	8	G 1/4" -19	19,0	13,0	29,0	14,0	16,5	23,5	22	19	11,10 x 1,78
XSDOR NW 06 HS VA	S	PN 400	10	G 3/8" -19	22,5	12,0	35,5	16,5	18,5	26,0	27	24	14,00 x 1,78
XSDOR NW 08 HS VA	S	PN 400	12	G 3/8" -19	22,5	12,0	35,0	16,5	18,5	26,0	27	24	14,00 x 1,78
XSDOR NW 10 HS VA	S	PN 400	14	G 1/2" -14	27,0	12,0	46,0	21,5	22,5	30,5	30	27	18,77 x 1,78
XSDOR NW 13 HS VA	S	PN 315	16	G 1/2" -14	27,0	14,0	46,0	21,5	22,0	30,5	30	27	18,77 x 1,78
XSDOR NW 16 HS VA	S	PN 315	20	G 3/4" -14	32,5	16,0	52,0	24,0	26,5	37,0	41	36	23,81 x 2,62
XSDOR NW 20 HS VA	S	PN 250	25	G 1" -11	40,0	19,0	63,0	30,5	31,5	43,5	50	46	29,82 x 2,62
XSDOR NW 25 HS VA	S	PN 160	30	G 1.1/4" -11	50,0	20,0	75,0	35,5	37,0	50,5	60	50	37,77 x 2,62
XSDOR NW 32 HS VA	S	PN 160	38	G 1.1/2" -11	55,5	22,0	74,0	40,5	41,5	57,5	70	60	41,28 x 3,53

PN = nominalni pritisak PB = maks. radni pritisak - Serija: LL = veoma lako L = lako S = teško - Ø = spoljni prečnik cevi

## Varijante proizvoda

XSDOR Zglobni navojni spoj, bez prigušivanja, W90°, čelik

SDOR VA Zglobni navojni spoj, bez prigušivanja, W90°, plemeniti čelik