

# HK WAPR

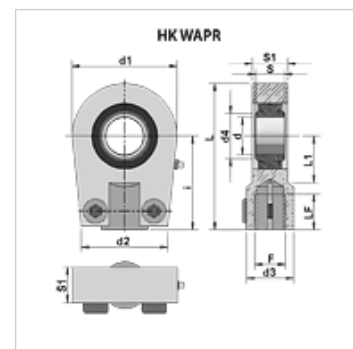
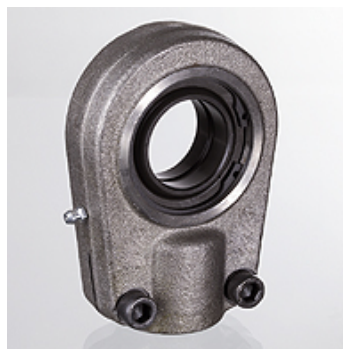
Zglobna glava sa ležajem koji se može naknadno podmazivati

**HANSA FLEX**

## Osobine

**Verzija** koji se može stegnuti

**Materijal** Čelik ST 52.3



## Napomene u vezi porudžbine

Ostale veličine i vrste zglobnih ležaja se mogu isporučiti na zahtev.

## Artikal

| Naziv         | d    | d1   | d2   | d3   | d4   | F        | i    | L    | L1   | S1   | S2   | LF   | S    | dozvoljeno din. opterećenja | Težina |
|---------------|------|------|------|------|------|----------|------|------|------|------|------|------|------|-----------------------------|--------|
|               | (mm) | (mm) | (mm) | (mm) | (mm) |          | (mm) | (mm) | (mm) | (mm) | (mm) | (mm) | (mm) | (kN)                        | (kg)   |
| HK WAPR 020 U | 20   | 56   | 46   | 25   | 24   | M 16x1,5 | 50   | 80   | 25   | 19   | 17   | 17   | 16   | 30                          | 0,44   |
| HK WAPR 025 U | 25   | 56   | 46   | 25   | 29   | M 16x1,5 | 50   | 80   | 28   | 23   | 21   | 17   | 20   | 48                          | 0,47   |
| HK WAPR 030 U | 30   | 64   | 50   | 32   | 34   | M 22x1,5 | 60   | 94   | 30   | 28   | 26   | 23   | 22   | 62                          | 0,77   |
| HK WAPR 035 U | 35   | 78   | 66   | 40   | 40   | M 28x1,5 | 70   | 112  | 38   | 30   | 28   | 29   | 25   | 80                          | 1,24   |
| HK WAPR 040 U | 40   | 94   | 76   | 49   | 45   | M 35x1,5 | 85   | 135  | 45   | 35   | 33   | 36   | 28   | 100                         | 2,12   |
| HK WAPR 050 U | 50   | 117  | 90   | 61   | 56   | M 45x1,5 | 105  | 168  | 55   | 40   | 37   | 46   | 35   | 156                         | 3,74   |
| HK WAPR 060 U | 60   | 130  | 120  | 75   | 67   | M 58x1,5 | 130  | 200  | 65   | 50   | 46   | 59   | 44   | 245                         | 6,49   |
| HK WAPR 070 U | 70   | 154  | 130  | 86   | 79   | M 65x1,5 | 150  | 232  | 75   | 55   | 51   | 66   | 49   | 315                         | 9,80   |
| HK WAPR 080 U | 80   | 176  | 160  | 105  | 89   | M 80x2   | 170  | 265  | 80   | 60   | 55   | 81   | 55   | 400                         | 14,40  |
| HK WAPR 090 U | 90   | 206  | 180  | 124  | 98   | M 100x2  | 210  | 322  | 90   | 65   | 60   | 101  | 60   | 490                         | 23,50  |