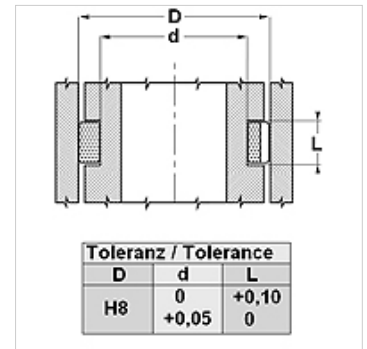
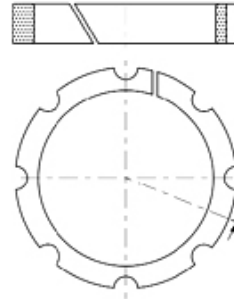


## Osobine

|                             |  |
|-----------------------------|--|
| <b>Brzina max.</b>          | 5,0 m/s  |
| <b>Pritiskanje površine</b> | pri 20°C 15 N/mm <sup>2</sup> ; pri 100°C 10 N/mm <sup>3</sup> |
| <b>Temperatura min.</b>     | -30 °C   |
| <b>Temperatura max.</b>     | 110 °C   |
| <b>Mediji</b>               | Mineralna ulja<br>Vodene emulzije                              |
| <b>Montaža</b>              | postaviti u žleb   |
| <b>Materijal</b>            | acetalna smola + stakleno vlakno                               |



## Napomena

Proračun poprečne sile;  $F = p \times D \times L \times n$

F= maksimalna poprečna sila (N)

p= maksimalna površina pritiskanja (N/mm<sup>2</sup>)

D x L= projektovana površina (mm<sup>2</sup>)

n= broj prstenova

## Opis

jednostavna obrada žleba za ugradnju i montaža

Velika nosivost za uranjajuće cilindre.

Pažnja, ne može se koristiti kao graničnik

## Artikal

| Naziv | D<br>(mm) | d<br>(mm) | L<br>(mm) |
|-------|-----------|-----------|-----------|
| WP 25 | 25        | 15        | 10,0      |
| WP 30 | 30        | 20        | 13,0      |
| WP 35 | 35        | 25        | 13,0      |
| WP 40 | 40        | 30        | 13,0      |
| WP 45 | 45        | 35        | 13,0      |
| WP 55 | 55        | 45        | 16,0      |
| WP 60 | 60        | 45        | 16,0      |
| WP 65 | 65        | 55        | 16,0      |
| WP 75 | 75        | 65        | 16,0      |
| WP 85 | 85        | 75        | 16,0      |