

# FI SG E MP

Element filtera za usisni filter MP

**HANSA FLEX**

## Osobine

Verzija bez bajpas ventila

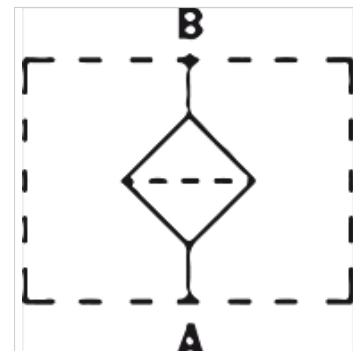
Temperatura min. -25 °C

Temperatura max. 110 °C

Materijal Zaptivka: NBR

Radni pritisak maks. 12 bara

Filter material Žičano pletivo



## Opis

Ovi filtere štite hidraulične pume od grubih nečistoća iz rezervoara. Montaža se vrši u rezervoaru.

## Napomene u vezi porudžbine

na zahtev se može isporučiti: ostale filterske jedinice, ostali navoji, filter sa bajpasom ili magnetom

## Artikal

Naziv	Filterska jedinica (µm)	Površina filtera (cm <sup>2</sup> )	Qmax (L/min)	G1	L (mm)	Ø B (mm)	SW (mm)	Težina (kg)
FI SG E MP 0078 M90	90	290	20	G 3/8"	79,0	52,0	30	0,16
FI SG E MP 0078 M90 1/2	90	290	28	G 1/2"	79,0	52,0	30	0,16
FI SG E MP 0095 M90 1/2	90	470	28	G 1/2"	95,0	70,0	41	0,16
FI SG E MP 0095 M90 3/4	90	470	66	G 3/4"	95,0	70,0	41	0,22
FI SG E MP 0135 M90 1 1/4	90	1046	170	G 1.1/4"	137,0	99,0	69	0,47
FI SG E MP 0135 M90 1 1/2	90	1046	170	G 1.1/2"	137,0	99,0	69	0,47
FI SG E MP 0140 M90 3/4	90	720	66	G 3/4"	141,0	70,0	41	0,30
FI SG E MP 0140 M90 1	90	720	130	G 1"	141,0	70,0	41	0,30
FI SG E MP 0140 M250 1	250	720	900	G 1"	141,0	70,0	41	0,30
FI SG E MP 0140 M90 1 1/2	90	2000	250	G 1.1/2"	160,0	130,0	70	0,84
FI SG E MP 0140 M90 2	90	2000	470	G 2"	160,0	130,0	70	0,84
FI SG E MP 0225 M90 1 1/4	90	1850	170	G 1.1/4"	227,0	99,0	69	0,68
FI SG E MP 0225 M90 1 1/2	90	1850	250	G 1.1/2"	227,0	99,0	69	0,68
FI SG E MP 0225 M90 2	90	1850	470	G 2"	227,0	99,0	69	0,68
FI SG E MP 0262 M90 2	90	3550	470	G 2"	262,0	130,0	69	1,25
FI SG E MP 0270 M90 2 1/2	90	3550	840	G 2.1/2" -11	272,0	130,0	101	1,25
FI SG E MP 0270 M90 3	90	3620	980	G 3" -11	272,0	130,0	101	1,25
FI SG E MP 0330 M90 3	90	4160	980	G 3" -11	330,0	130,0	101	1,30

Qmax - maks. volumen protoka