

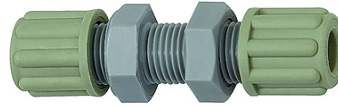
# K-SCHOTTVERBINDUNGEN

Bulkhead couplings

**HANSA FLEX**

## Osobine

<b>Radni pritisak</b>	Dependent on operating temperature; Max. 10 bar (at 20 °C); Max. 1 bar (at 60 °C)
<b>Navojno telo</b>	Polyamide (PA)
<b>Stezni prsten</b>	Polypropylene (PP)
<b>Navrtka</b>	Polypropylene (PP)



## Napomena

Ostali podaci na upit.

## Opis

Manufactured from high impact-resistant, UV-stabilised engineering plastic, extremely resistant to weathering. Good chemical resistance to benzine, diesel oil, fuel oil and alkalis. <br>Not suitable for use with acids.

## Artikal

Naziv	Navoj	za crevo	L1 (mm)	SW
K- 07 40 32 74	M 10 x 1	4 mm / 6 mm	53,0	14 mm
K- 07 40 32 75	M 14 x 1,5	6 mm / 8 mm	64,0	19 mm
K- 07 40 32 76	M 16 x 1,5	8 mm / 10 mm	73,0	22 mm
K- 07 40 32 77	M 18 x 1,5	9 mm / 12 mm	84,0	24 mm