

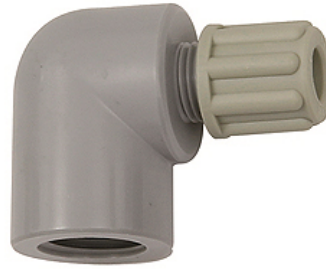
K-W90 GAM IG

Female elbows with female G thread

HANSA FLEX

Osobine

Radni pritisak	Dependent on operating temperature; Max. 10 bar (at 20 °C); Max. 1 bar (at 60 °C)
Navojno telo	Polyamide (PA)
Stezni prsten	Polypropylene (PP)
Navrtka	Polypropylene (PP)



Napomena

Ostali podaci na upit.

Opis

Manufactured from high impact-resistant, UV-stabilised engineering plastic, extremely resistant to weathering. Good chemical resistance to benzene, diesel oil, fuel oil and alkalis.
Not suitable for use with acids.

Artikal

Naziv	Navoj	za crevo	L1 (mm)	L2 (mm)
K- 07 40 32 98	G 1/8	4 mm / 6 mm	26,0	17,0
K- 07 40 32 99	G 1/8	6 mm / 8 mm	29,0	17,0
K- 07 40 33 00	G 1/4	4 mm / 6 mm	29,0	20,0
K- 07 40 33 01	G 1/4	6 mm / 8 mm	32,0	20,0
K- 07 40 33 02	G 1/4	8 mm / 10 mm	35,0	20,0