

# K-RD NIPPEL KURZ ES

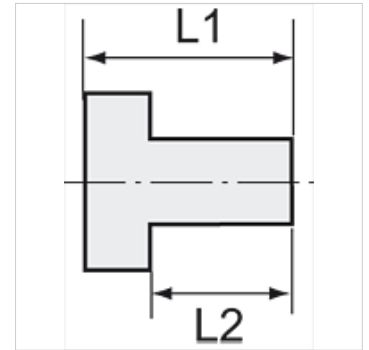
Reducing nipples, short type

**HANSA FLEX**

## Osobine

Radni pritisak Max. 20 bar

Materijal plemeniti čelik 1.4571



## Napomena

The dimensions of the standard screw fittings may change slightly during the life of the catalogue as a result of optimisation processes.

Ostali podaci na upit.

## Dodatne informacije

Further types and dimensions on request.

## Artikal

Naziv	Spoljni navoj	Unutrašnji navoj	L1 (mm)	L2 (mm)	SW
K- 07 40 15 27	G 1/8	M 5	11,0	7,0	14 mm
K- 07 40 15 26	G 1/4	M 5	14,0	10,0	17 mm
K- 07 40 15 28	G 1/4	G 1/8	13,0	8,0	17 mm
K- 07 40 15 33	G 3/8	G 1/8	13,0	9,5	19 mm
K- 07 40 15 29	G 3/8	G 1/4	13,0	9,5	19 mm
K- 07 40 15 35	G 1/2	G 1/8	18,0	12,0	24 mm
K- 07 40 15 34	G 1/2	G 1/4	15,5	11,5	22 mm
K- 07 40 15 30	G 1/2	G 3/8	15,5	11,5	22 mm
K- 07 40 15 36	G 3/4	G 3/8	18,0	12,0	32 mm
K- 07 40 15 31	G 3/4	G 1/2	21,0	14,0	32 mm
K- 07 40 15 37	G 1	G 1/2	24,0	16,0	36 mm
K- 07 40 15 32	G 1	G 3/4	18,0	12,0	36 mm