

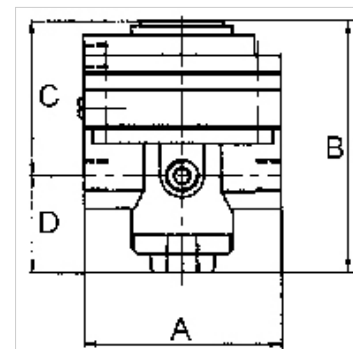
K-PRAEZI DRUCKREGL PNEU FERN

Precision pressure regulators

HANSA FLEX

Osobine

Ulazni pritisak	Max. 16 bar
Temperatura medija	max. 60 °C
Temperatura okoline	Max. 60 °C
Mediji	Micro-filtered, unoiled compressed air (0.01 µm)
Priključak manometra	G 1/4
Protok	3000 l/min
Priključak za odzračivanje	G 3/8 (for mounting a silencer)
Upravljački pritisak	Max. 10 bar
Priključak upravljačkog vazduha	G 1/8
Zaptivni materijal	NBR
Kućište	Die-cast zinc, painted black
Sopstvena potrošnja vazduha	6 l/min at Pin = 16 bar



Napomena

Attention! A set of wearing parts cannot be supplied! These pressure regulators may only be opened in the factory! The given flow rates are based on the following parameters: 3000 l/min: P1: 5 bar, P2: 3 bar, $\Delta p \leq 0,1$ bar.

Ostali podaci na upit.

Opis

With high flow rate and large secondary relief port. Pneumatically controlled diaphragm pressure regulators with large secondary relief port for applications requiring an extremely accurate working pressure, especially at high flow rates. We recommend our »multifix« series of pilot controllers.

Dodatne informacije

1500 l/min: P1: 10 bar, P2: 7 bar, $\Delta p \leq 0.1$ bar.

Artikal

Naziv	Navoj	Opseg regulacije	A (mm)	B	C (mm)	D (mm)
K- 07 25 09 35	G 1/2	0.05 - 7 bar (max. 10 bar)	82,0	108,0 mm	64,5	43,5

Rezervni delovi

K-HALTERBAUSATZ STANDARD	Holder
K-KM MS	Hexagonal lock nuts, brass
K-SCHALLDAEPFER VYON	Vyon silencers
K-FILTERELEMENT	Filter element
K-XV AGM 2	Double nipples, parallel male thread