

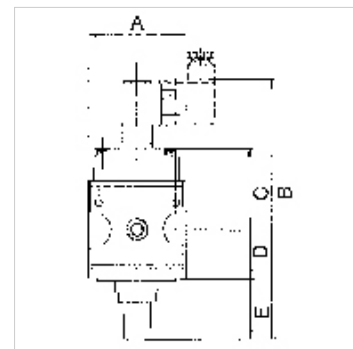
K-SCHALTVENTILE 3/2 MULTIFIX

On-off valves (3/2-way valves)

HANSA FLEX

Osobine

| | |
|--------------------------------|--|
| Ulazni pritisak | Min. 2 bar, max. 10 bar |
| Temperatura medija | max. 60 °C |
| Temperatura okoline | Max. 60 °C |
| Priključak na električnu mrežu | Device plug PG 9, type B, EN 175301-803 |
| Vrsta zaštite | IP 65 (P 54) acc. to DIN 40050 |
| Relativno vreme radnog ciklusa | 100 % |
| Priključak za odzračivanje | Silencer G 1/4 |
| Zaptivni materijal | NBR |
| Kućište | Die-cast zinc |
| Merenje vrednosti protoka | At P1 = 6 bar and pressure drop $\Delta p = 1$ bar |



Napomena

Ostali podaci na upit.

Opis

Pneumatic systems or parts of systems can be switched on and off by means of an electrical signal. When they are switched off, the system is relieved at the same time.

Napomene u vezi porudžbine

On-off valves are also available in a pneumatically operated version. Please ask for more information.

Artikal

| Naziv | Navoj | Protok (L/min) | Magnetni kalem | A (mm) | B | C (mm) | D (mm) | E (mm) | Konstrukciona veličina |
|----------------|-------|----------------|--------------------------|--------|----------|--------|--------|--------|------------------------|
| K- 07 25 11 65 | G 1/4 | 900 | 24 V AC, 50 Hz | 47,8 | 138,7 mm | 43,7 | 26,0 | 17,5 | 1 |
| K- 07 25 11 66 | G 1/4 | 900 | 230 V AC, 50 Hz | 47,8 | 138,7 mm | 43,7 | 26,0 | 17,5 | 1 |
| K- 07 25 11 67 | G 1/4 | 900 | 110 V AC, 50 Hz | 47,8 | 138,7 mm | 43,7 | 26,0 | 17,5 | 1 |
| K- 07 25 11 68 | G 1/4 | 900 | 24 V DC | 47,8 | 138,7 mm | 43,7 | 26,0 | 17,5 | 1 |
| K- 07 25 11 69 | G 1/2 | 4000 | 24 V AC, 50 Hz / 12 V DC | 68,8 | 185,0 mm | 56,2 | 33,5 | 44,1 | 2 |
| K- 07 25 11 70 | G 1/2 | 4000 | 230 V AC, 50 Hz | 68,8 | 185,0 mm | 56,2 | 33,5 | 44,1 | 2 |
| K- 07 25 11 71 | G 1/2 | 4000 | 110 V AC, 50 Hz | 68,8 | 185,0 mm | 56,2 | 33,5 | 44,1 | 2 |
| K- 07 25 11 72 | G 1/2 | 4000 | 24 V DC | 68,8 | 185,0 mm | 56,2 | 33,5 | 44,1 | 2 |

Pribor

K-SCHALLDAE SINTERBR GE MS1 Silencers, sintered bronze, with brass hexagon nut and brass thread

Rezervni delovi

| | |
|--------------------------------|-----------------|
| K-KOPPELPAKET MEHR | Coupling packet |
| K-KOPPELPAKET SCHMA | Coupling packet |
| K-GERAETESTECKER | Coupling socket |
| K-HALTERBAUSATZ MULTIFIX | Holder |
| K-MAGNETSPULE MULTIFIX | Solenoid |
| K-WV 3/2 VORSTEU HAND MULTIFIX | 3/2-way valve |