

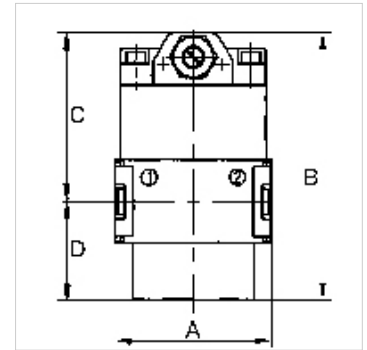
K-ANFAV MULTIFIX MINI

Start-up valves

HANSA FLEX

Osobine

Ulazni pritisak	Min. 2.5 bar, max. 16 bar
Temperatura medija	max. 60 °C
Temperatura okoline	Max. 60 °C
Protok	1600 l/min
Zaptivni materijal	NBR
Kućište	Die-cast zinc
Merenje vrednosti protoka	At P1 = 6 bar and pressure drop $\Delta p = 1$ bar



Napomena

If several devices in the »multifix-mini« Series are assembled together, the maximum working pressure is 12 bar.

Ostali podaci na upit.

Opis

Seat valves operated by secondary pressure for controlled pressurisation of pneumatic systems. The full cross-section of the regulator is opened at 50% of the input pressure. With adjustable restrictor!

Artikal

Naziv	Navoj	A (mm)	B	C (mm)	D (mm)
K- 07 25 11 53	G 1/4	45,0	77,5 mm	48,5	29,0

Pribor

K-HALTERBAUSATZ Holder

Rezervni delovi

K-KOPPELPAKET MEHR Coupling packet